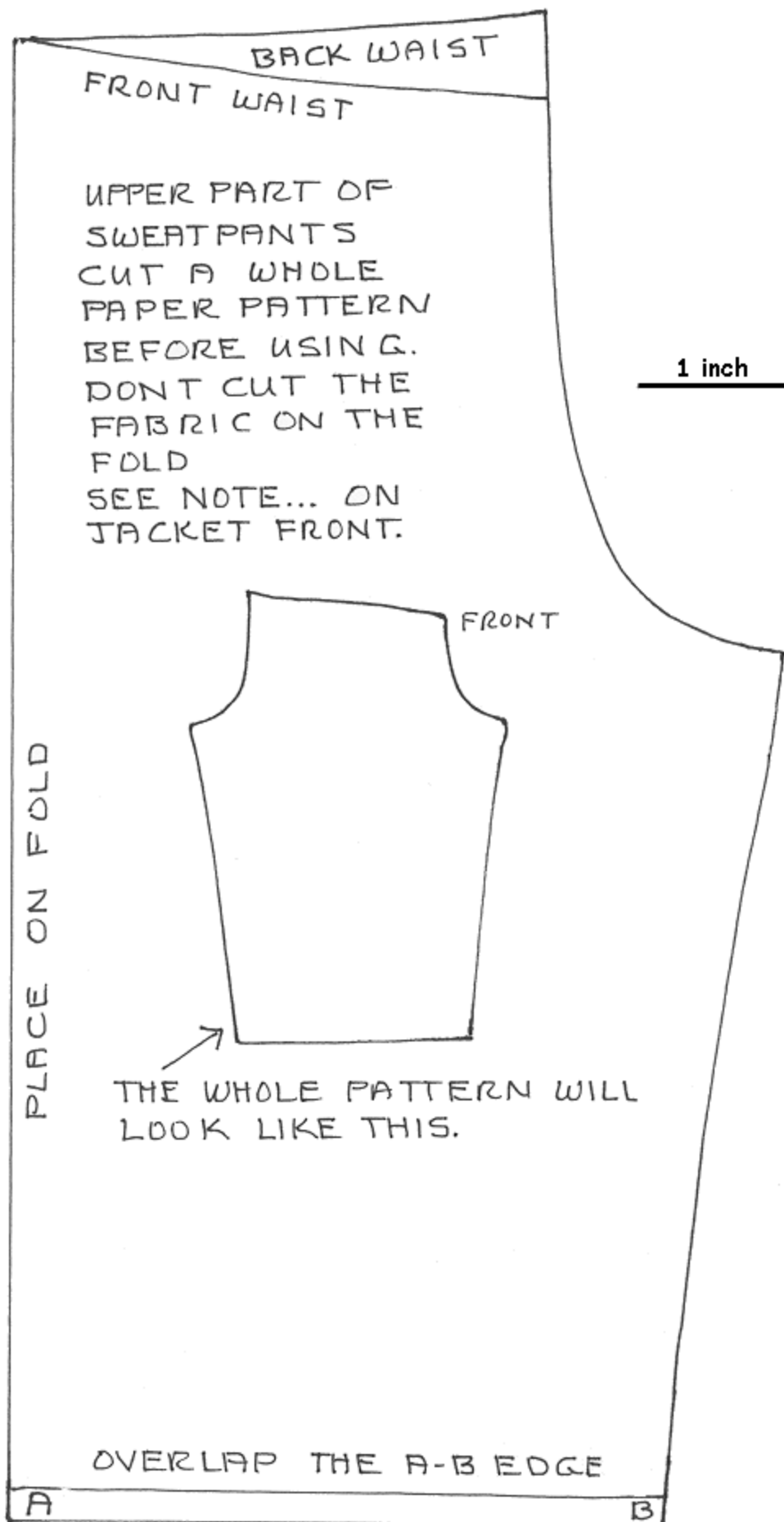
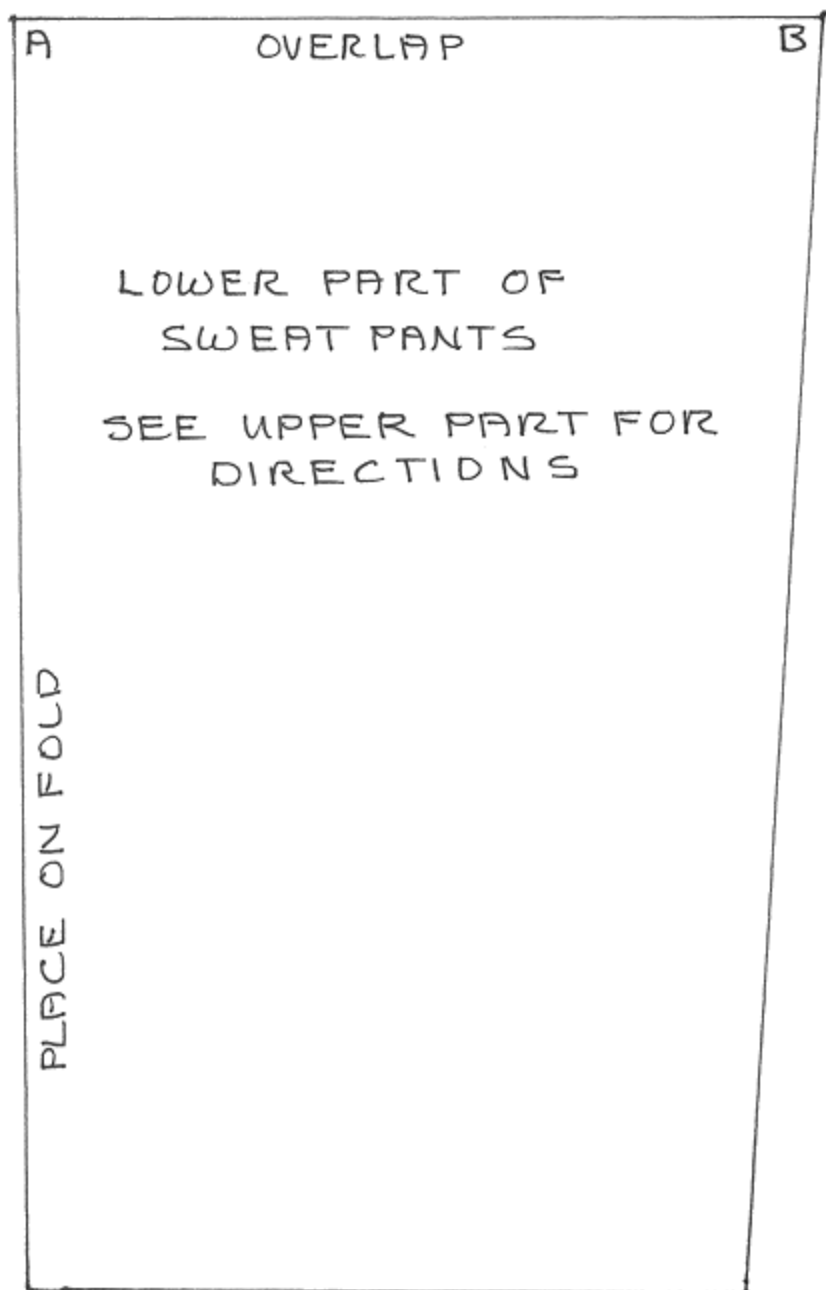


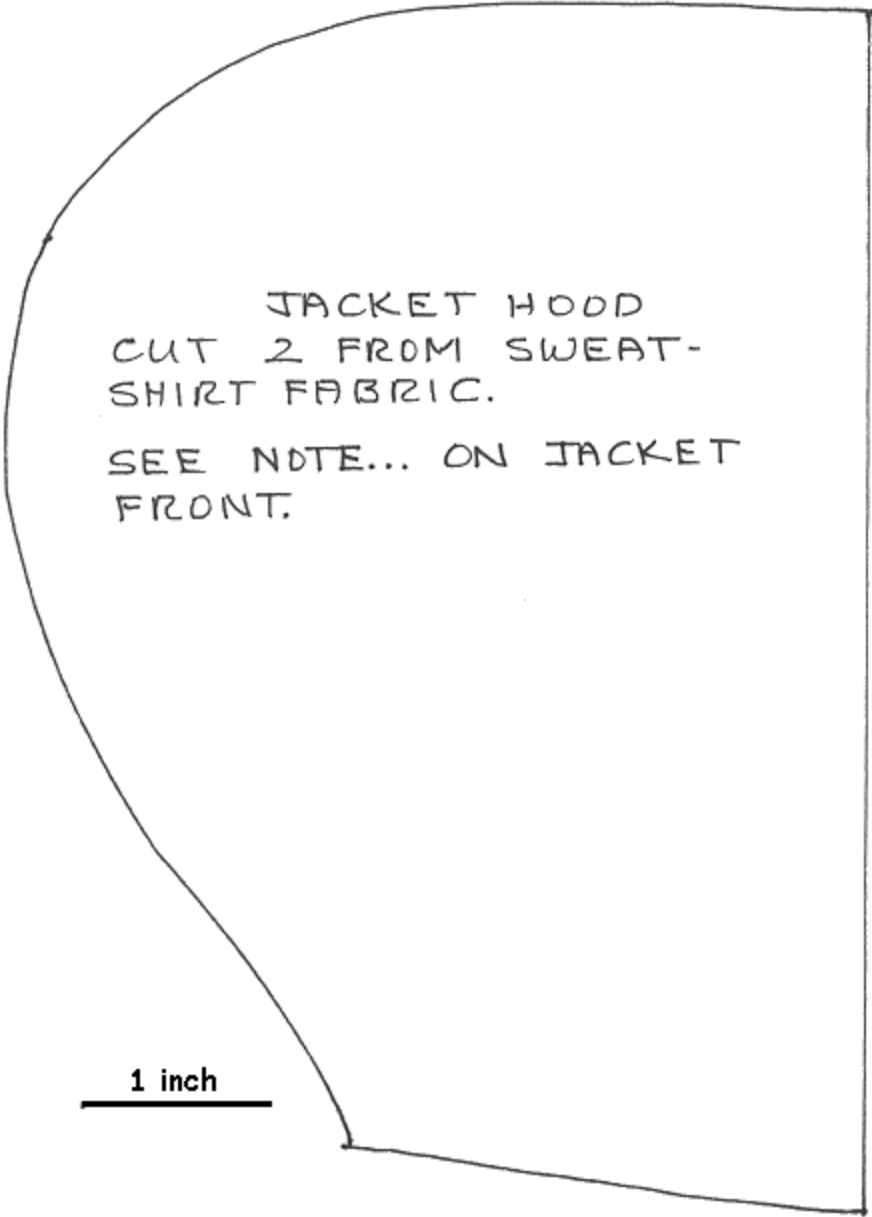
ADD SEAM ALLOWANCE TO ALL
EDGES EXCEPT WHERE MARKED
PLACE ON FOLD AND AT THE A-B
EDGE.



ADD SEAM ALLOWANCE TO ALL EDGES EXCEPT WHERE MARKED PLACE ON FOLD AND AT THE A-B EDGE.

1 inch



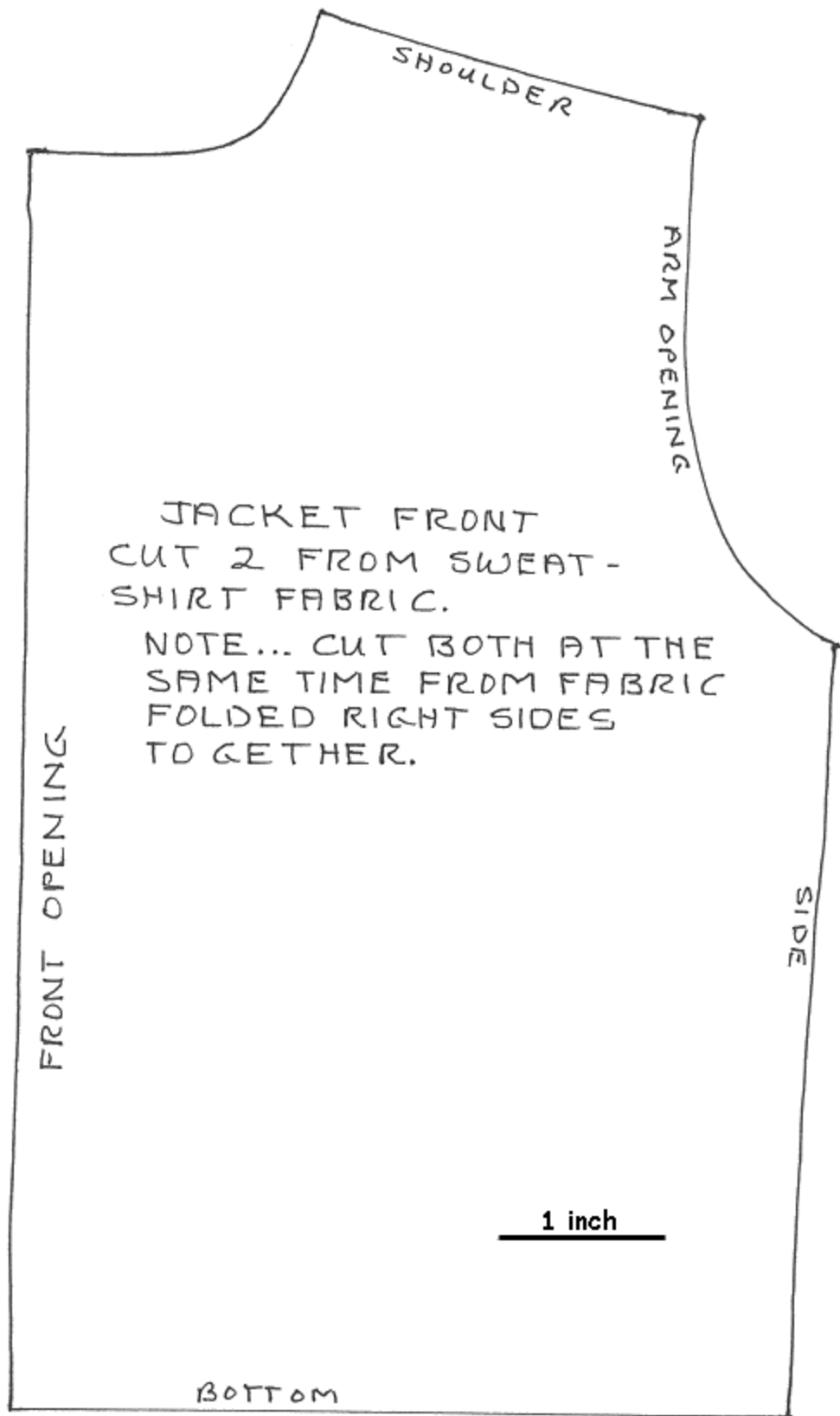


JACKET HOOD
CUT 2 FROM SWEAT-
SHIRT FABRIC.

SEE NOTE... ON JACKET
FRONT.

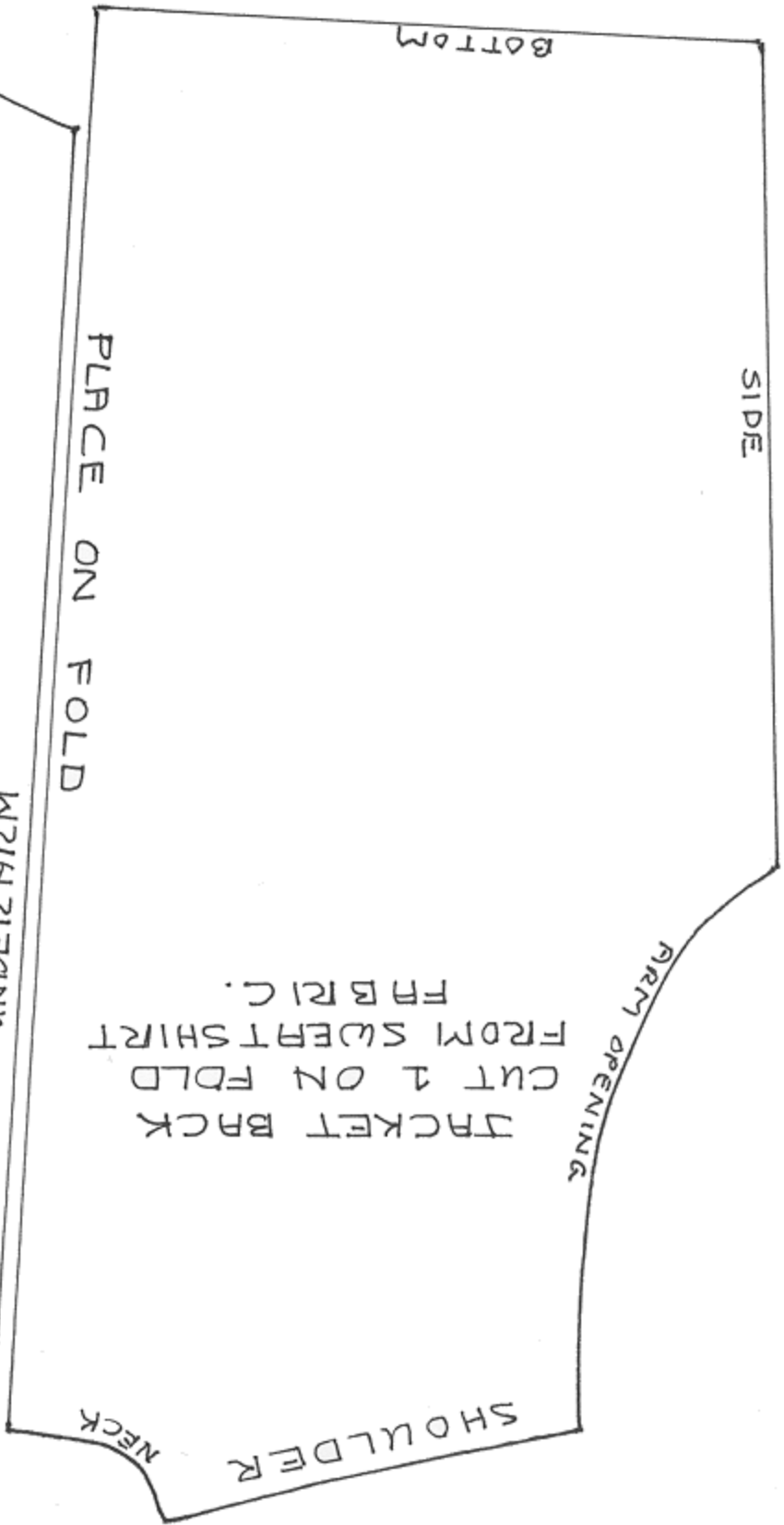
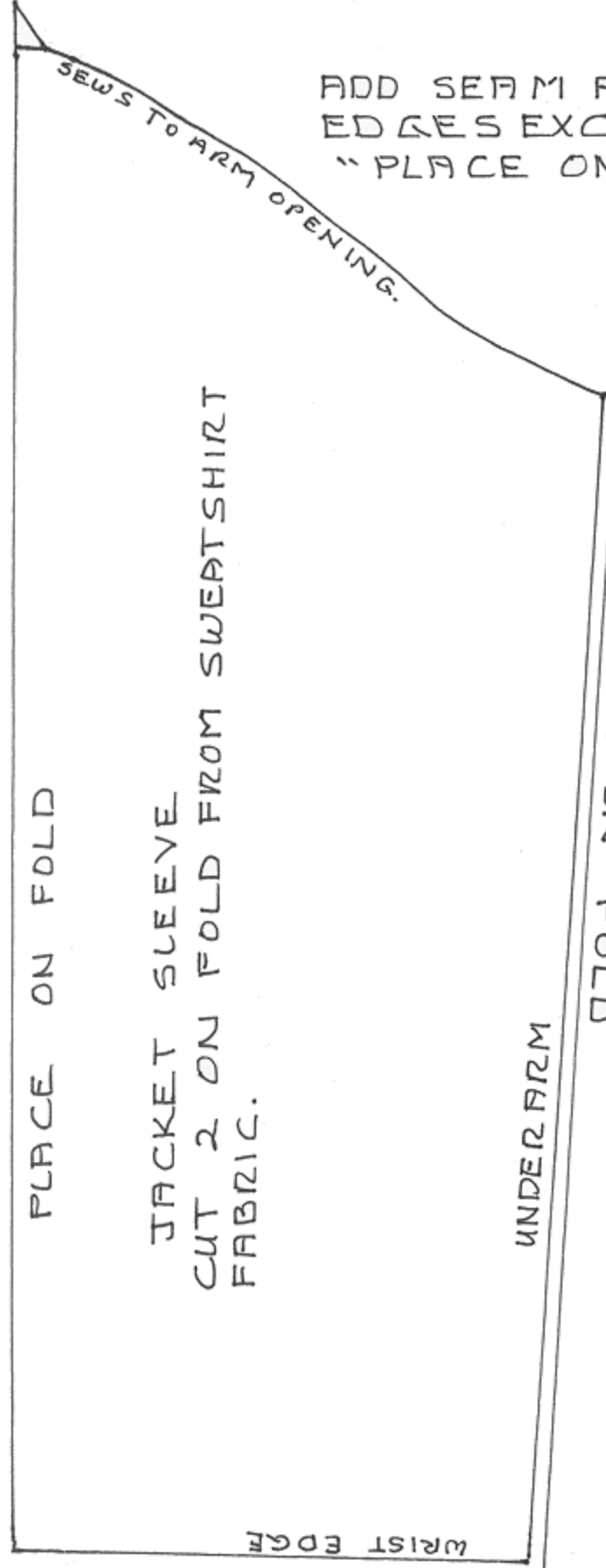
1 inch

ADD SEAM ALLOWANCE ALL AROUND



ADD SEAM ALLOWANCE ALL AROUND.

ADD SEAM ALLOWANCES AT ALL EDGES EXCEPT WHERE MARKED "PLACE ON FOLD" 1 inch



FRONT

TIE ON BIKINI BOTTOM

PLACE ON FOLD

CUT 1 OF EACH PIECE AND TIE IT ON. STRETCH IT AS YOU TIE IT SO IT FITS TIGHTLY

I FOLDED THE TOP AND BOTTOM EDGES TO THE INSIDE FOR A MORE FINISHED LOOK.

NO SEAM ALLOWANCES NEEDED FOR THE TIE ON BIKINI.

← MOST STRETCH →

BACK

1 inch

TIE ON BIKINI TOP

← MOST STRETCH →

PLACE ON FOLD