

C D

"Multi Use Patterns"

Dollmaking For Everyone Class

Copyright 1999 Judi Ward

Page 1 of 6

1 inch

Note: There are no seam allowances included on any pieces. Full instructions are in the class lessons.

Middle PART OF THE GOWN FOR "ANGELIQUE" AND BLOUSE/SLIP FOR 'MARIA'

CUT 1 ON FOLD

After printing pattern tape the A-B edge to the A-B edge on the Lower Part found on Page 2.

Also tape the C-D edge to the C-D edge of the Upper Part found on Page 3.

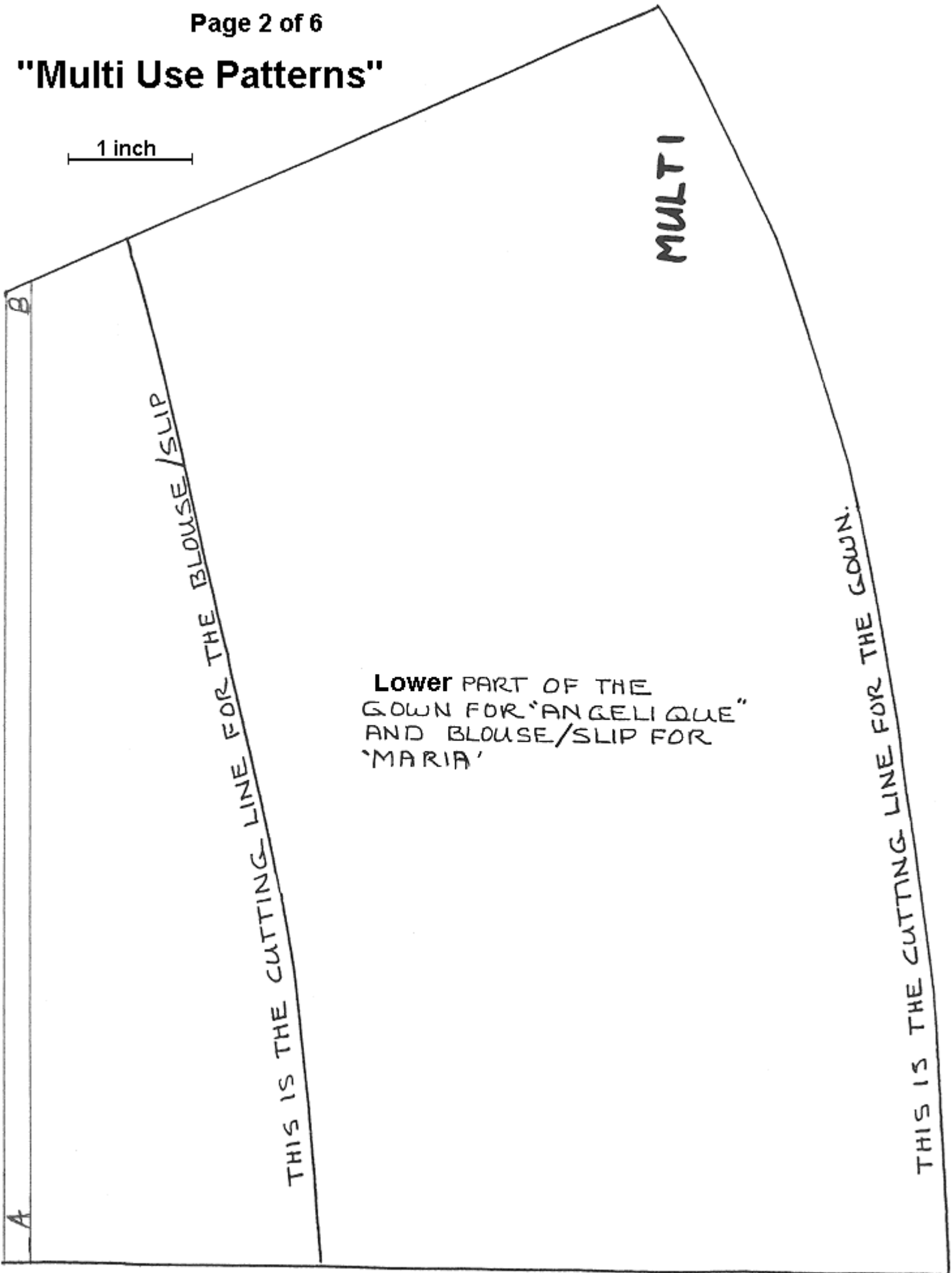
PLACE ON FOLD

A

B

"Multi Use Patterns"

1 inch



MULTI

THIS IS THE CUTTING LINE FOR THE BLOUSE / SLIP

Lower PART OF THE GOWN FOR "ANGELIQUE" AND BLOUSE / SLIP FOR 'MARIA'

THIS IS THE CUTTING LINE FOR THE GOWN.

PLACE ON FOLD

UPPER PART OF THE
GOWN FOR "ANGELIQUE"
AND BLOUSE/SLIP FOR
MIRIA

PLACE ON FOLD

MULTI

C

D

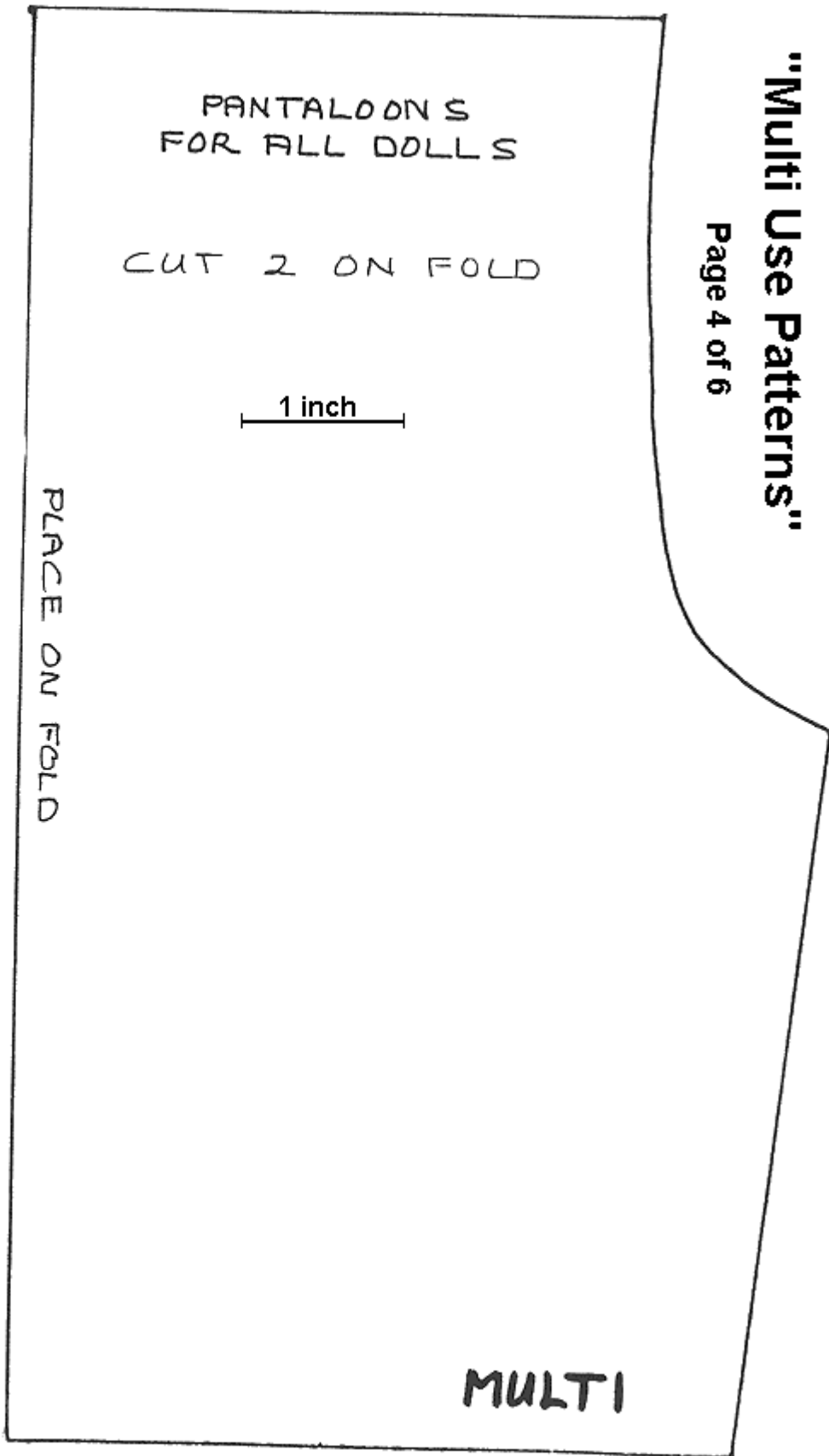
THIS LINE IS FOR THE
SHORTER SLEEVE →

THE FAR LINE IS FOR
THE LONG SLEEVE →

1 inch

"Multi Use Patterns"

Page 4 of 6



CUT 1 FOR EACH SKIRT OR PETTICOAT

MULTI

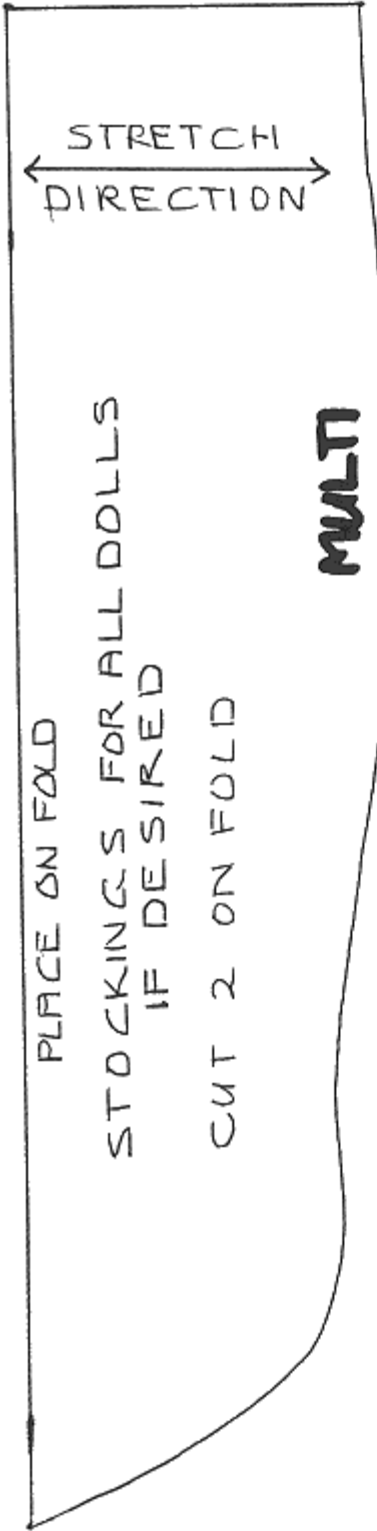
FOLD LINE FOR WAIST BAND

SKIRT WAIST BAND FOR 'MARIA'

PETTICOAT WAISTBAND FOR 'SUSANNAH' AND 'JENNIFER'

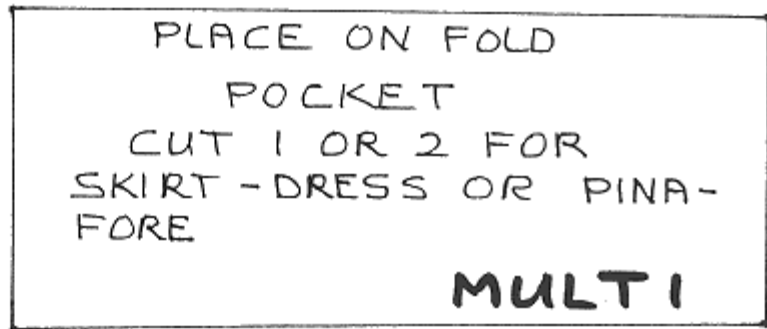
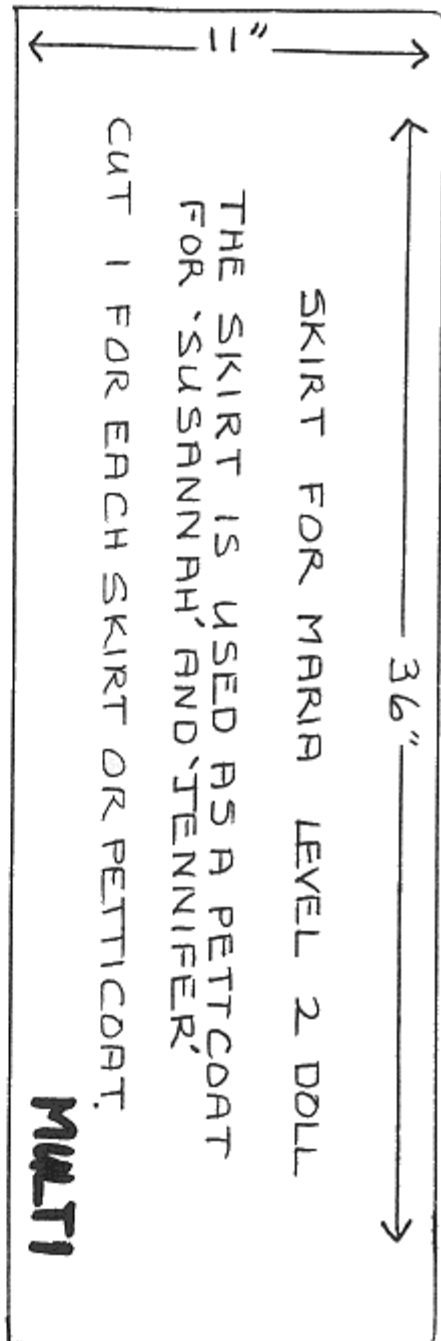
"Multi Use Patterns"

Page 5 of 6



1 inch

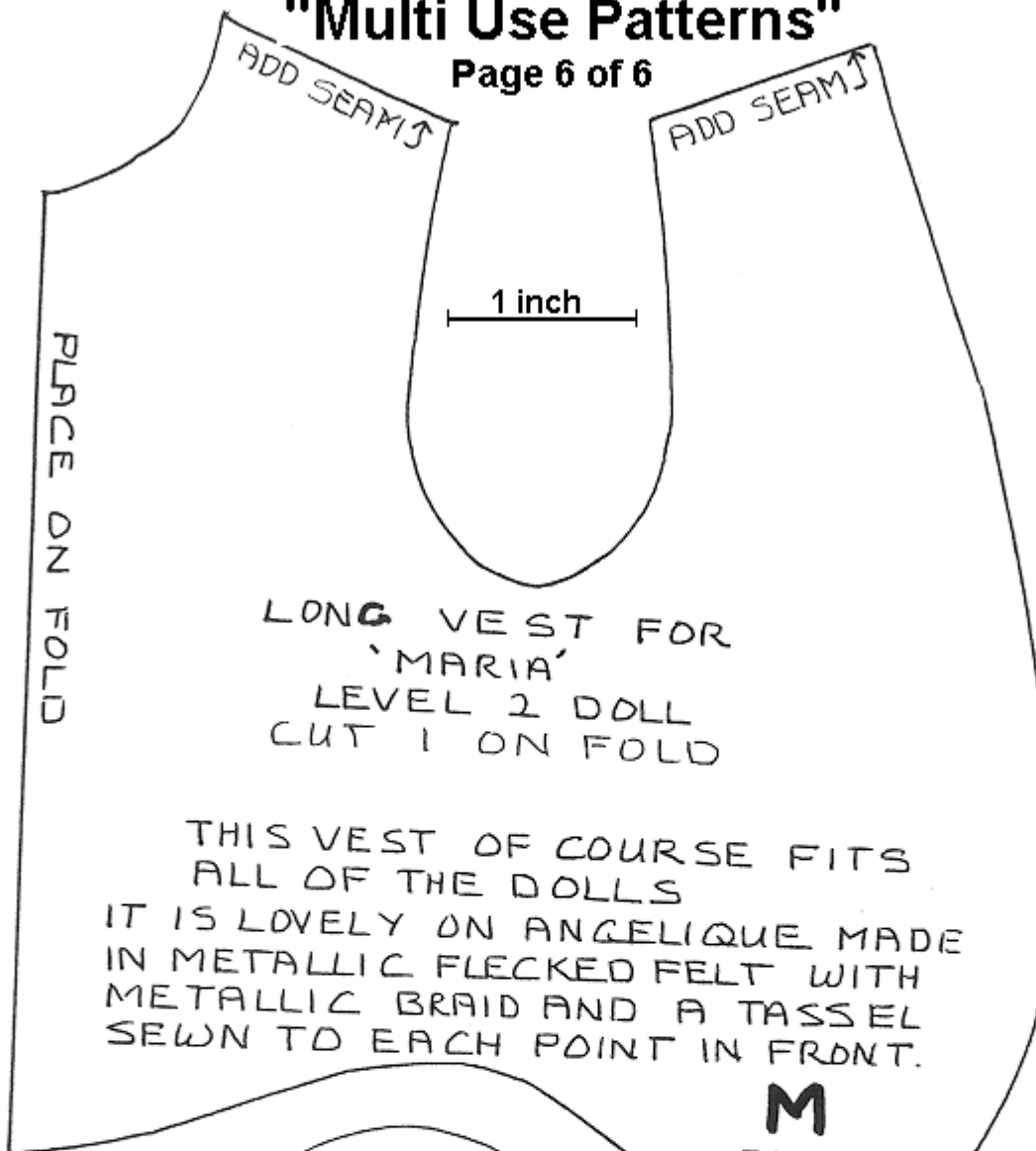
THE SKIRT PATTERN ABOVE IS DIMENSIONAL. USE THE MEASUREMENTS TO MAKE YOUR PATTERN. A STRIP OF FREEZER PAPER IS GOOD TO MAKE PATTERNS ON.



"Multi Use Patterns"

Page 6 of 6

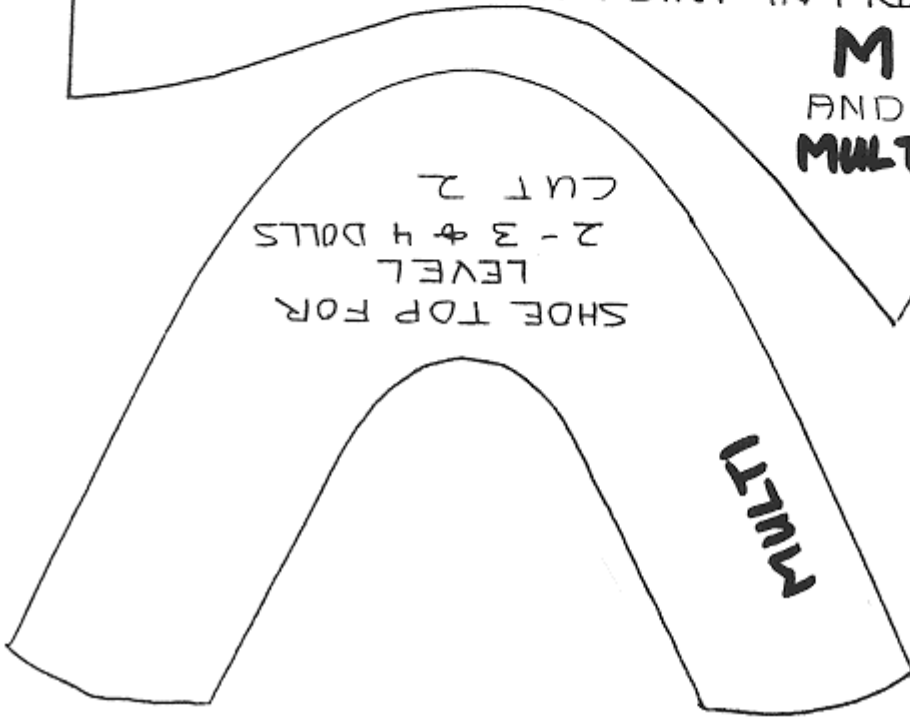
THE VEST IS DESIGNED TO BE MADE FROM FELT. NO SEAM ALLOWANCES NEED TO BE ADDED EXCEPT AT SHOULDERS.



LONG VEST FOR
'MARIA'
LEVEL 2 DOLL
CUT 1 ON FOLD

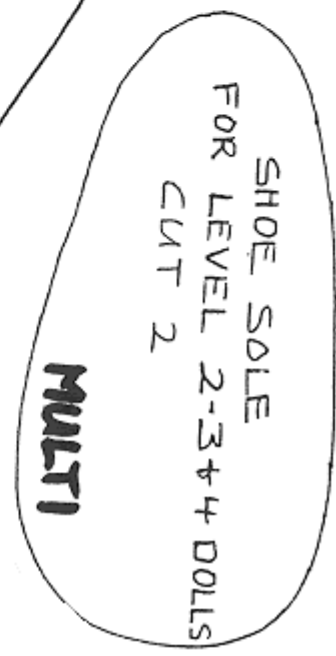
THIS VEST OF COURSE FITS ALL OF THE DOLLS IT IS LOVELY ON ANGELIQUE MADE IN METALLIC FLECKED FELT WITH METALLIC BRAID AND A TASSEL SEWN TO EACH POINT IN FRONT.

M
AND
MULTI



SHOE TOP FOR
LEVEL
2-3 & 4 DOLLS
CUT 2

MULTI



SHOE SOLE
FOR LEVEL 2-3 & 4 DOLLS
CUT 2

MULTI