

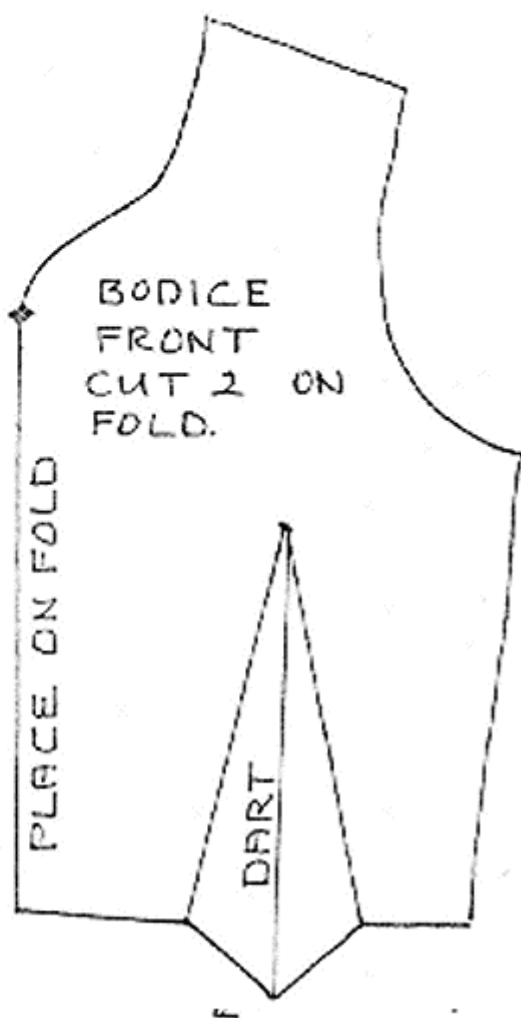
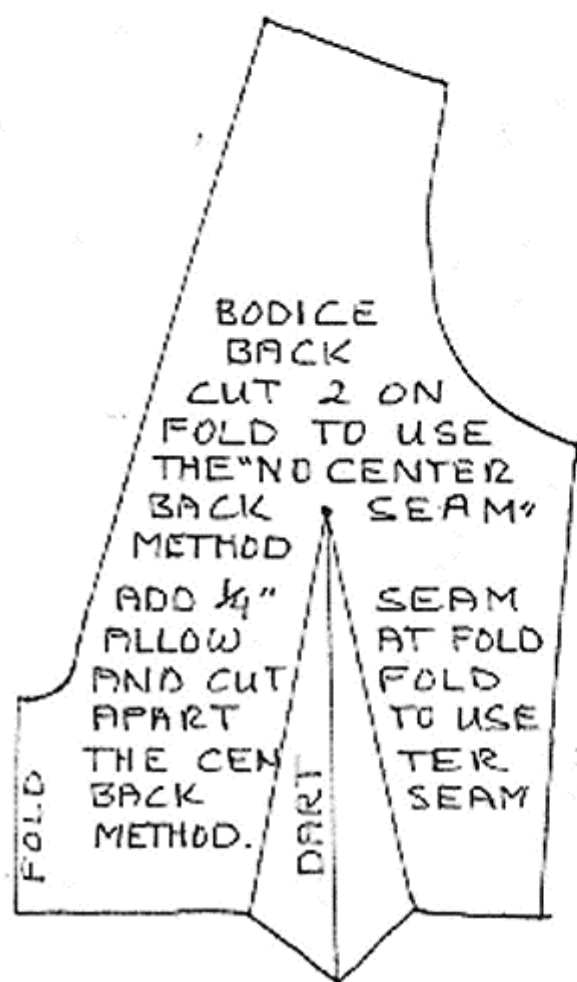
1-37 ADD  $\frac{1}{4}$ " SEAM ALLOWANCE TO THE BODICE EXCEPT AT THE CENTER FRONT AND THE CENTER BACK WHERE THEY ARE MARKED "FOLD" OR "PLACE ON FOLD". THIS BACK IS DESIGNED WITH THE LAPOVER.

1 inch

IF YOU WANT TO PUT A ZIPPER IN TAKE OFF  $\frac{1}{4}$ " AT THE CENTER BACK AND THEN PLACE ON FOLD.

IF YOU WANT TO HAVE THE CENTER BACK SEAM IN THE BODICE, ADD  $\frac{1}{4}$ " AT THE BACK FOLD AND CUT THE FOLD APART.

CHOICES! CHOICES!  
CHOICES!



15" TO 14" LONG

45" TO 54" WIDE

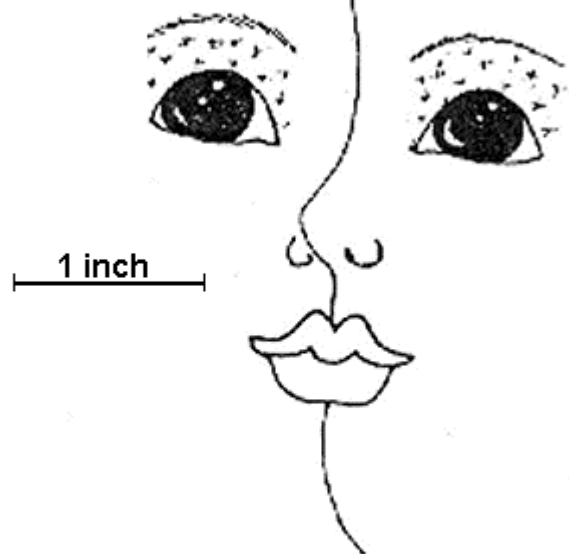
FORMAL SKIRT

CUT 1 FROM SILKY FABRIC

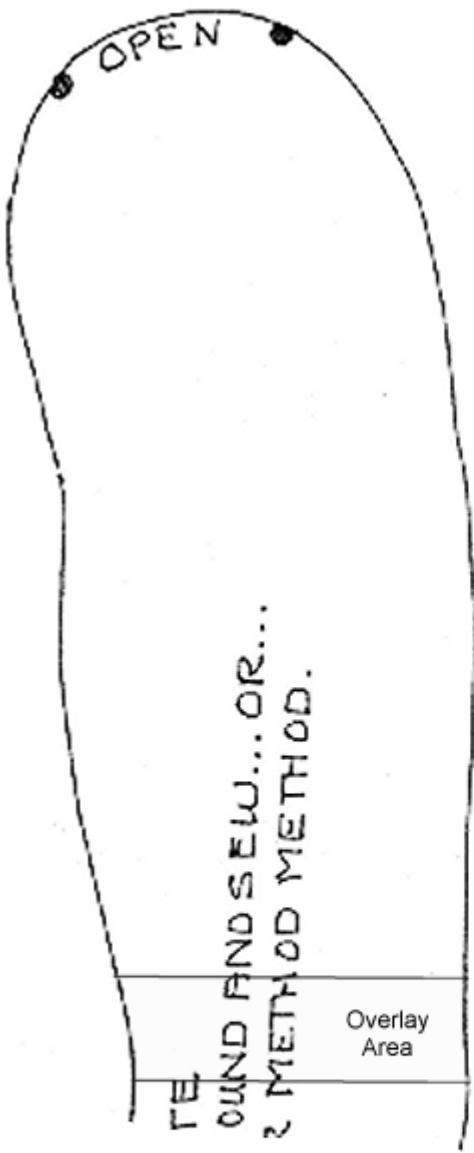
ALSO CUT 2 FROM NYLON NET FOR  
SLIP

ALSO CUT 2 FROM TULLE FOR  
THE OVERSKIRT  
IF DESIRED...

A FACE IDEA..  
USE REAL LASHES...  
MAKE GLITTERY  
EYELIDS FROM EYE  
TO EYEBROW...



SHOE FRONT  
TEMPLATE  
USE JUST  
LIKE THE  
FOOT FRONT  
AND TOE  
FRONT TEMPLATES.



1 inch

