

## **Milli'** - The French Boudoir Doll

© 2000 Judi Ward -Judi's Dolls

---

### **...Chapter 7 Part 2...**

**... Applying and styling the hair into an upswept hairdo using felting needles ...**

You can also glue the hair, use a felting and glue combo or use a real doll wig. Milli' takes a size 11"-12" doll wig..

---

### **\*\*\*The Rat\*\*\***

The "rat" is needed to provide lift at the top of the head for the upsweep to be secured to.

1. Take a wad of stuffing about as big as a baseball and wad it up in your hand to compress it.
2. Place it at the top/back of the head and needle felt it into the head. You want a little half dome secured to her head. Your mind will race with ideas now too! This wad of stuffing "felts" in so nicely that you will begin to see old folks hair and beards and mustaches. There are tons of possibilities. (Hmmm? Colored stuffing?)



**A wad of stuffing. I have compressed it some already.**



**Starting to "felt" the wad into the head.**



**The stuffing felted in place. I cheated and started this before the glue was all dry, so you can see a little white by her ear. It will all dry clear though.**

3. Remember those little bits of hair you saved? Get those out and felt them on top of the "rat" so the "rat" matches the hair.



**The little bits felted over the stuffing rat.**

**WOW! What an image!!!!**

**But, this too will pass and your Milli' will be glorious real soon!**

4. Now, carefully "finger comb" and use a big needle (or that broken felting needle) to comb the hair up to the top of the head. Twist the ends together at the top and put a big straight pin straight down into the twist and into the head to hold the hairdo in place for a minute.

5. You may get it "right" the first time, and you may have to untwist it and do it again.

Following is a picture of the twisting and one of the hairdo a little "off". I am going to

"needle comb" the hair a little more and re-twist it to make it more symmetrical.

Then I am going to re-twist it and make an upsweep that is "planned" to be asymmetrical.

This can get addicting!!! CAUTION\*\*\*If you are a perfectionist where hair is concerned, "an every hair in place person", you will have to give up at some point soon, and go with the look you have achieved. Mohair simply doesn't work for "every hair in place" hairdos.



**The twist. Twist til the hair twists back on itself some.**



**This is too uneven for my liking.**



**Quite symmetrical. A little prim?**



**The side view.**



**Planned asymmetry. The twist was done slightly to the side.**



**From the back. The "rose" put to use again.**

I am going to "go with" this asymmetrical hairdo for this Milli'. (Now I have to make a red rose or 2 or 3) Hope I remember how!

6. To secure the twist after you like what you have, we go back to the felting needle. I simply push it in several times, where the twist is fastened down with the long pin. This pushes some of the twist into the head and secures it.

You can also simply leave the pin in, rather than "felting" to secure, or do both. I do both.

7. Now, glue her ears back. I put a little dab of hot glue (about the size of a big pin head) right in the center/back of the ear, and press it down with my finger. Only glue the center, not around the edges. By pressing in the center, the part of a real ear that sticks out will stick out on your doll too.



**Her ear glued back.**



**Nice flat ears. Nice lobes for ear rings too.**

8. Once her ears are glued back you will need to spray her hair REALLY WELL with hair spray, or for a really permanent hold, I use Clear Acrylic spray. Her hair becomes a "near sculpture" this way. When the spray goes on, it will look bubbly...Don't mess with it. It will dry clear and bubble free. (Don't spray a loose hairdo, only the upsweep)

Protect the rest of your doll with plastic wrap when spraying. I have no way of knowing what you have put on the face, what brands, what pencils, what paints etc. and some things will run like crazy if they are touched with ANY clear spray. Let the spray dry before going on to the tendrils. I like the tendrils to be soft, so do them after I spray the hairdo.

9. Now lets add those little tendrils in front. These dress up the hairdo so much.

Use the little swatches of hair you saved, or cut off a bit of the extra hair you have left over. Lay the little swatch along the side of the head, right where the hairline is. The picture will tell it better. Needle felt the swatch right into the hairline, pulling the little swatch into the head to about the top of the ear level. Repeat for the other side. You may want some at the back too, or farther up on the forehead. It is your choice and it is so easy to do.



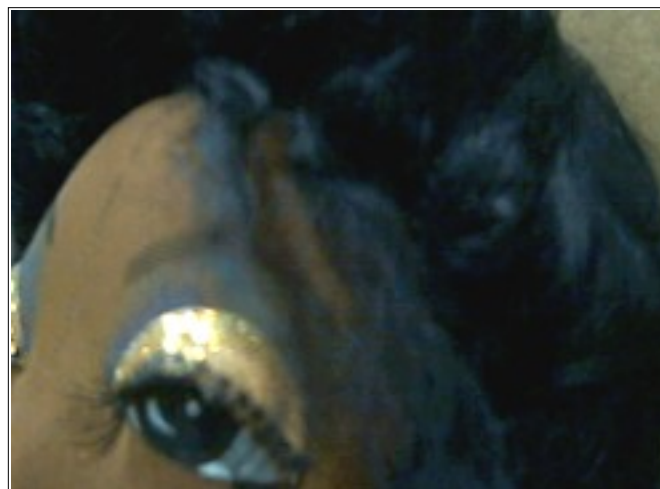
**The swatch laid in place.**



**The swatch pushed into and felted into the hairline. Be sure to felt it right into the hairline, not where it is laying in the first picture.**



**Both sides felted into the hairline.**



**Some shorter tendrils felted in.**

Following are 2 pictures. One is of the doll we have been working on and the other is of another doll that I did a two-tone hairdo on. Her hair is blond and I felted in lavender tendrils. I left some hanging down and needle combed some back into her hair too. Love the "look"!



**Isn't she lovely?**



**And, isn't she lovely?**

## **A final Quick lesson....How to put a doll wig on.**

1. First, put the rat on the head top...or...you can stuff under the wig after it is nearly all glued on. Wigs are made for very broad, round headed porcelain dolls and nearly always need stuffing at the crown area for cloth dolls.

2. Heat your glue gun up.

The wig I will demo on is a loose, long curl wig with a center part. When I took it out of the bag, I shook it really hard to loosen the curls more, and took the silly pink bows out. The wig I am using is a 12" WTA2 from Tallina's doll supply. (Address at the beginning of the class.)



**Remember this head? The Rat is on.**



**The wig, shaken out.**

3. Place the wig on your dolls head with the center at the front hairline. Put a straight pin in there.
4. Pull the sides down to below the ear level for this style (no ears needed)
5. Put a pin in there.



**The front pinned down.**



**One side pinned down. See how low it is? All of the marks for the hairline need to be covered.**

7. Remove the pin from the center front and lift the edge of the wig. Put a little bit of hot glue there and press the center down and hold for a few seconds.

8. Lift a little more of the wig up at the side and put glue there. Hold a few seconds.

9. Repeat all the way around the head, working from the center around on the left and the center around on the right. Do Not glue over the neck.

Be sure to cover the hairline marks that you drew.



**Gluing in the center.**



**Gluing by the jaw line.**



**All glued on. A little plain looking? Of course, she has no eyelashes yet either .**



**How about a little lift. Ahhh, Yes, I like that. The curly, messy "look". I will neaten the pulled up part some and tie it in with strong cord.**



The top hair tied in. She has the sultry "look" already.  
Just wait til she gets her eyelashes!

**Well, that's all for the "hairy stuff"!**

Have fun with the hair. Don't get too frustrated with the mohair if you have chosen to do the upswept hairdo. It is a little messy and takes a little while but is very lovely.

Our next lesson will be the simple clothes and trims. I will be using things available at stores nearby for trims, like pre-made "silk" flowers etc. If you have wonderful flowers, beads, buttons, ribbons, baubles and trims to use, please don't feel like you have to find just what I show. I show these because I know they are available at Jo Anns, Michaels, Wal Mart, and most other fabric and craft stores. They look very nice and you won't go crazy trying to find some "delicacy" local to my area, that is not available anywhere else!

Oh Yes, I promise we will get those eyelashes on soon. They are just really hard to deal with when we are doing all this other stuff. "Near bout" tore them off the dark doll while I was doing her hair.

**Dolly Hugs, Judi**

---

*Go to... ~ [Classroom](#) ~ [Black Board](#) ~ [Pattern](#) ~*

---

**Copyright Notice: All pages and graphics are copyrighted by the Internet Visions Company and/or instructor.  
You may print these out for the use of the class only. All other uses or distributions are forbidden.**

---

Crafty College and Doll Net are divisions of the [Internet Visions Company](#).  
© 1997-2003, Internet Visions Co. All rights reserved.