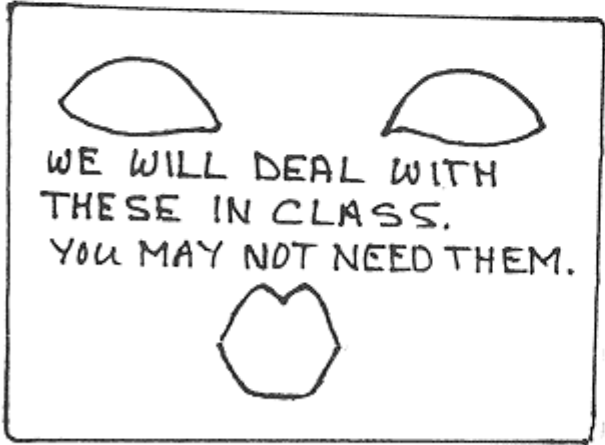
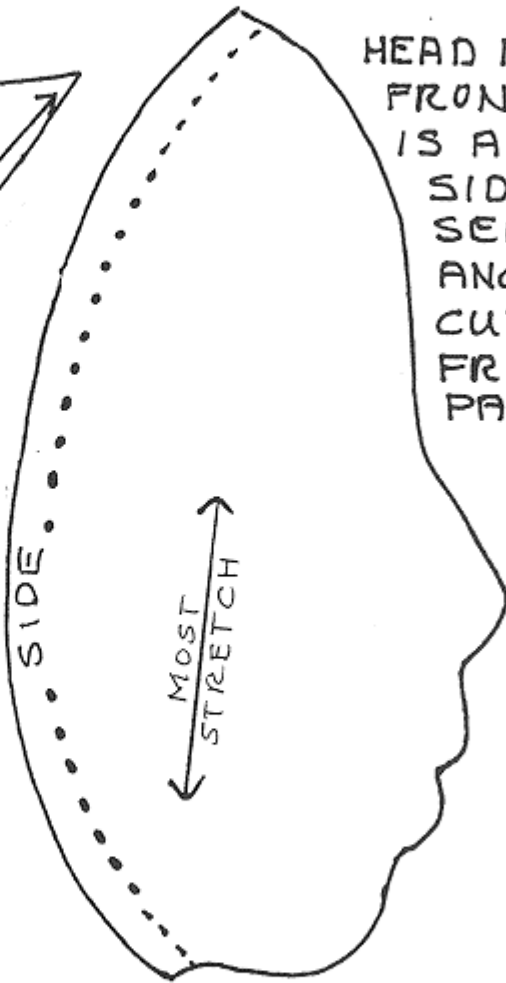


CENTER BACK SEAM IS A TEMPLATE. SIDE SEAM HAS A SEAM ALLOWANCE ON.

1 inch

HEAD BACK CUT 1 FROM FREEZER PAPER

HEAD FRONT... FRONT SEAM IS A TEMPLATE. SIDE HAS A SEAM ALLOWANCE ON. CUT ONE FROM FREEZER PAPER.



WE WILL DEAL WITH THESE IN CLASS. YOU MAY NOT NEED THEM.

THE EYE AND MOUTH TEMPLATES ARE FOR THOSE WHO DON'T FREE HAND FACES... WITH THE TEMPLATES NON ARTISTS WILL SUCCEED IN MAKING A LOVELY FACE.

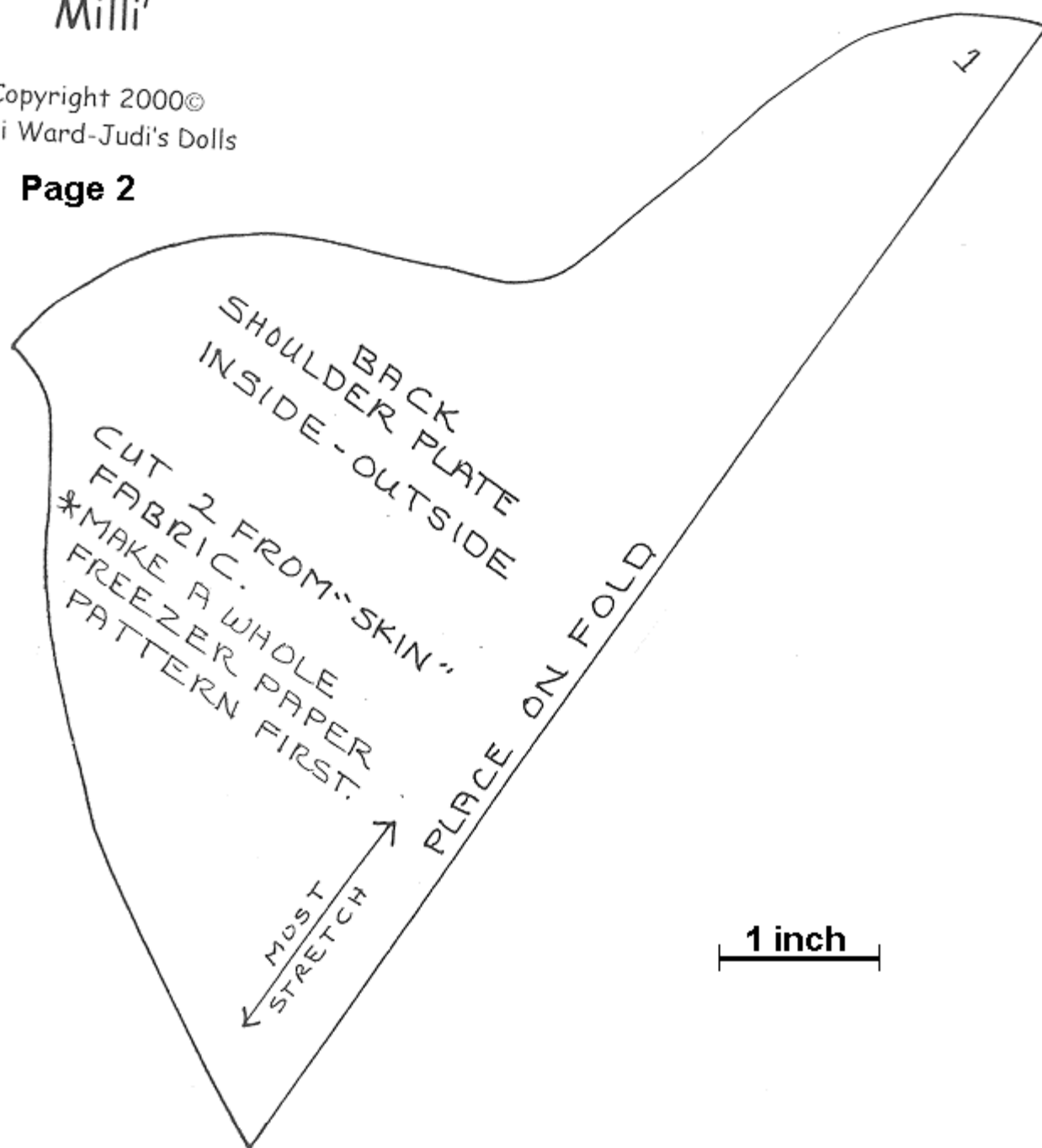
Milli'

Copyright 2000© Judi Ward-Judi's Dolls

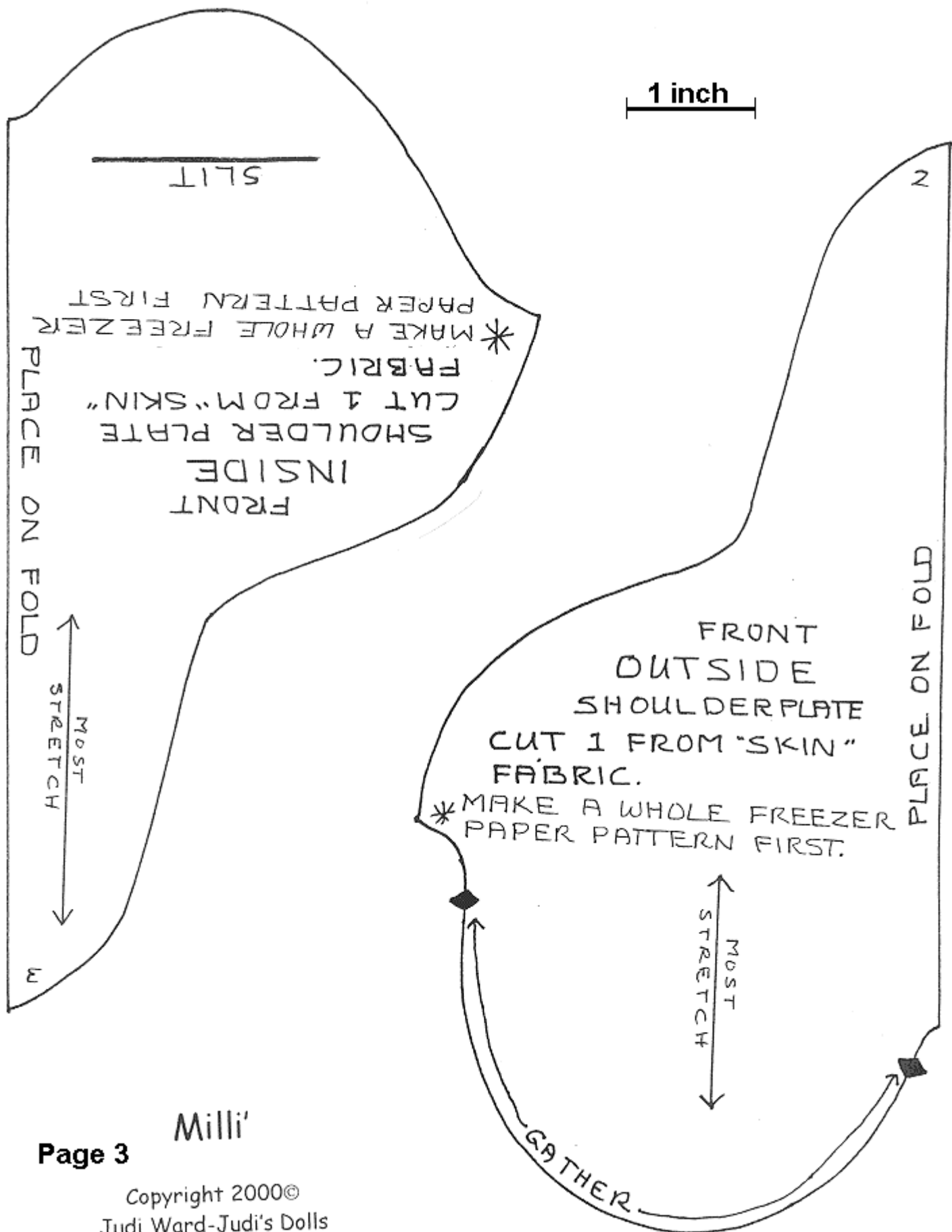
Milli'

Copyright 2000©
Judi Ward-Judi's Dolls

Page 2

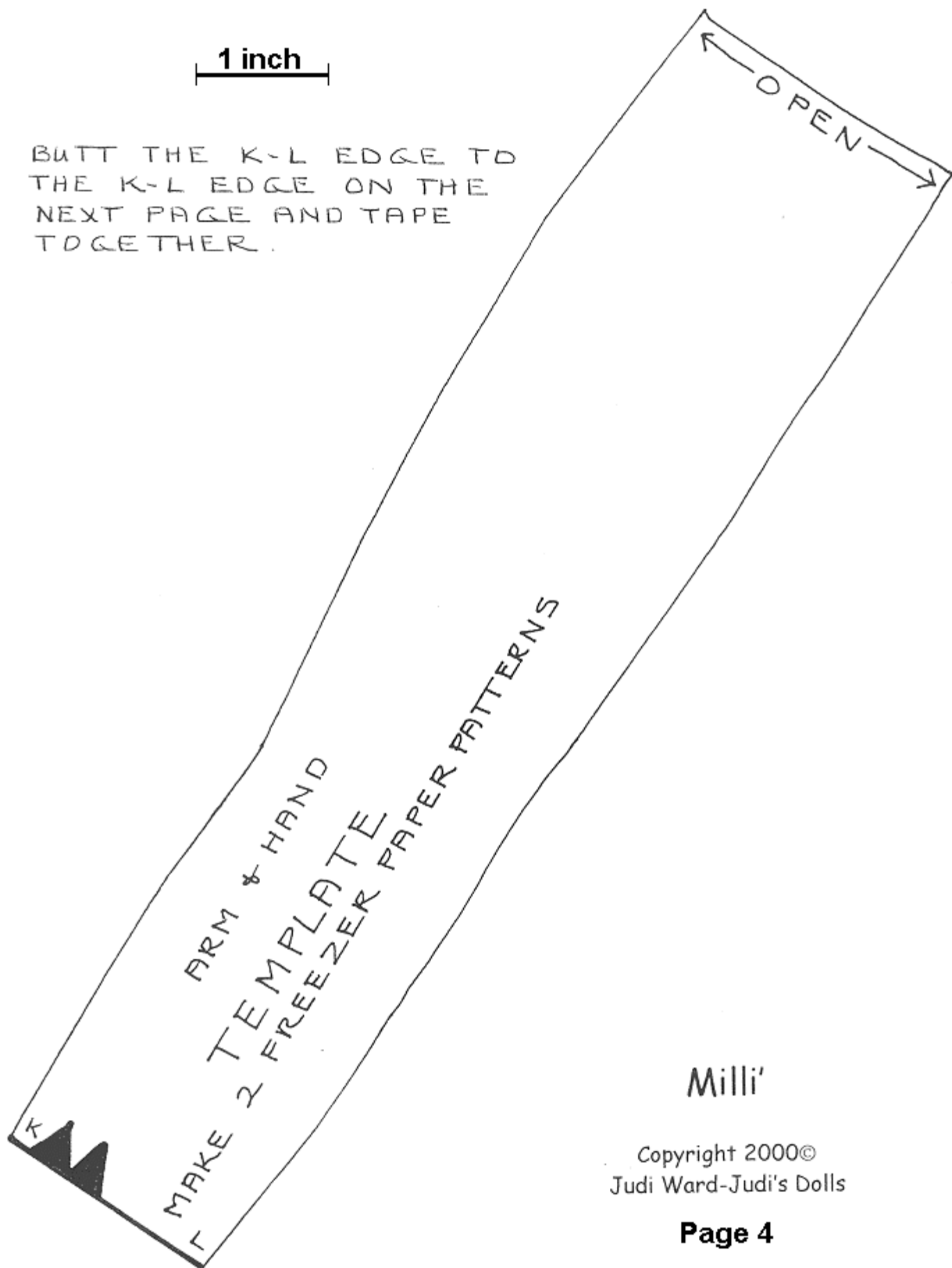


MAKE WHOLE FREEZER
PAPER PATTERNS OF THE 3 SHOULDER
PLATE PIECES.
THE SHOULDER PLATE PIECES
HAVE SEAM ALLOWANCES INCLUDED.



1 inch

BUTT THE K-L EDGE TO
THE K-L EDGE ON THE
NEXT PAGE AND TAPE
TOGETHER.



Milli'

Copyright 2000©
Judi Ward-Judi's Dolls

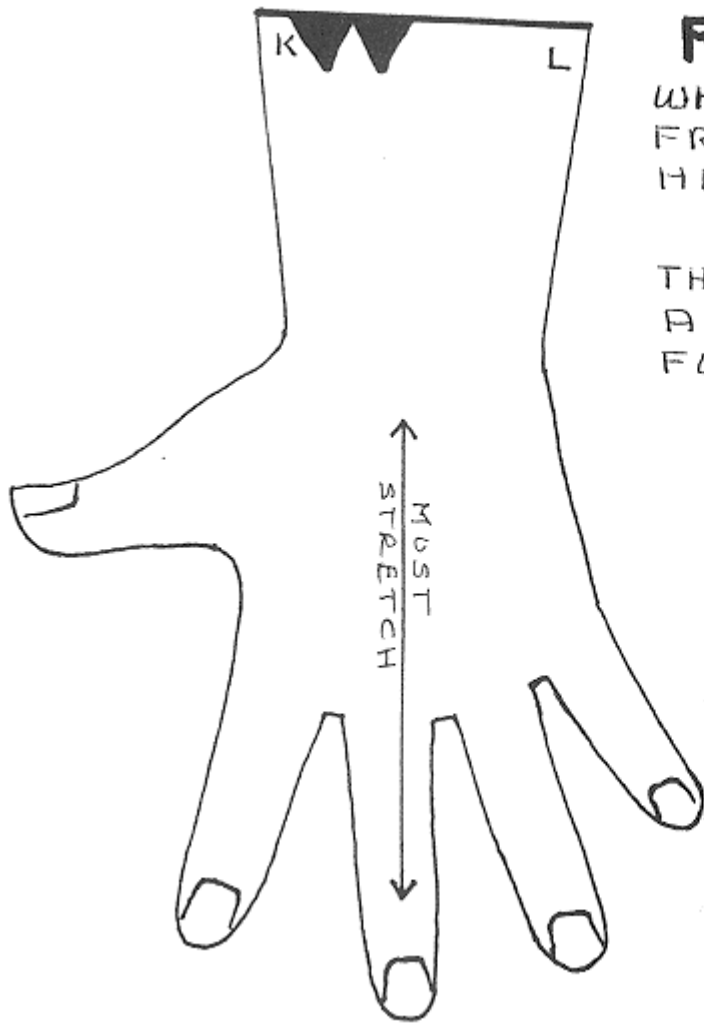
Page 4

REMEMBER !!!

WHEN CUTTING OUT YOUR
FREEZER PAPER ARM AND
HAND PATTERN

CUT OFF

THE LINES YOU DREW
AROUND THE FINGERS
FOR LONG, SLIM FINGERS.

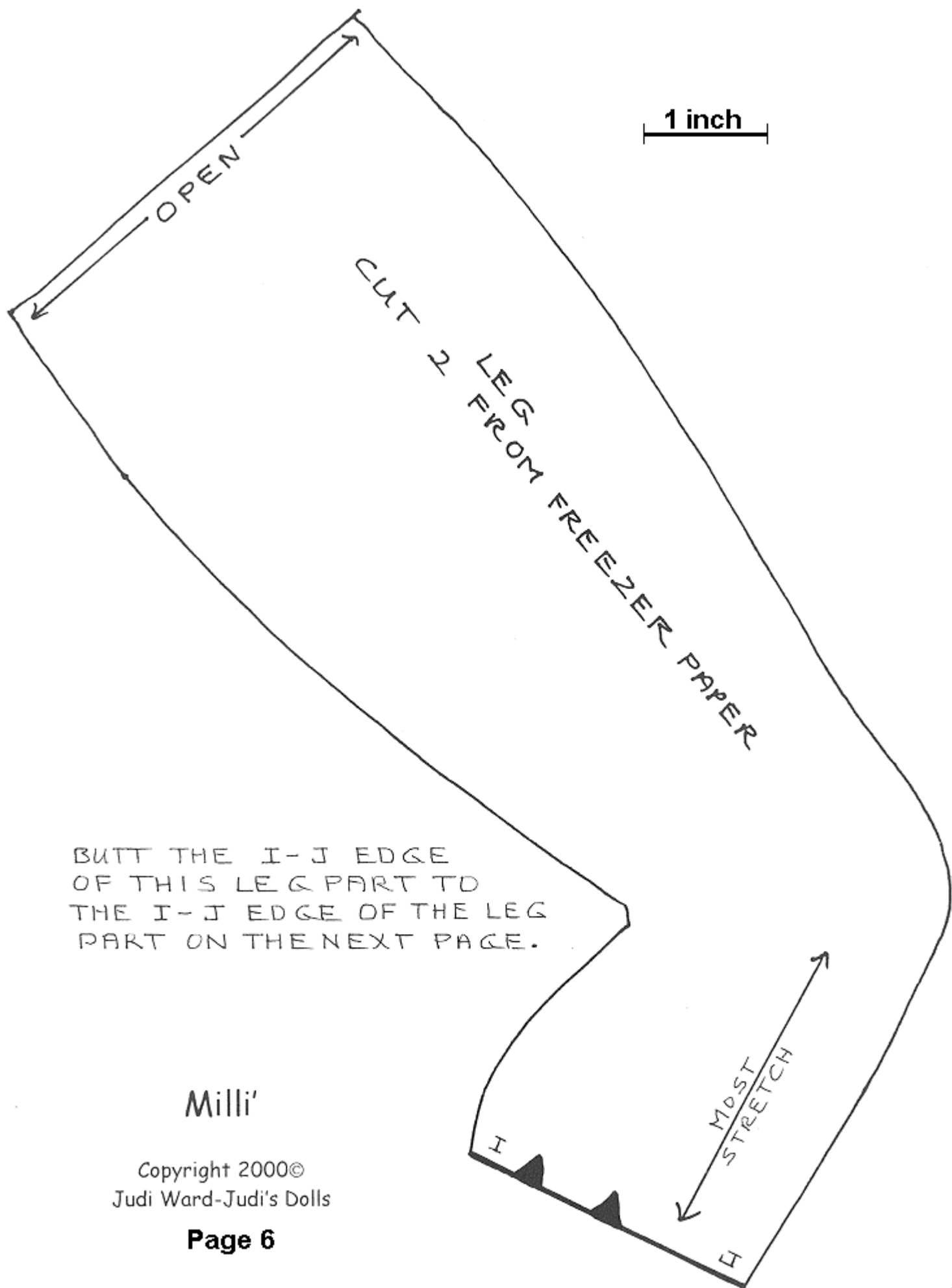


1 inch

Milli'

Copyright 2000©
Judi Ward-Judi's Dolls

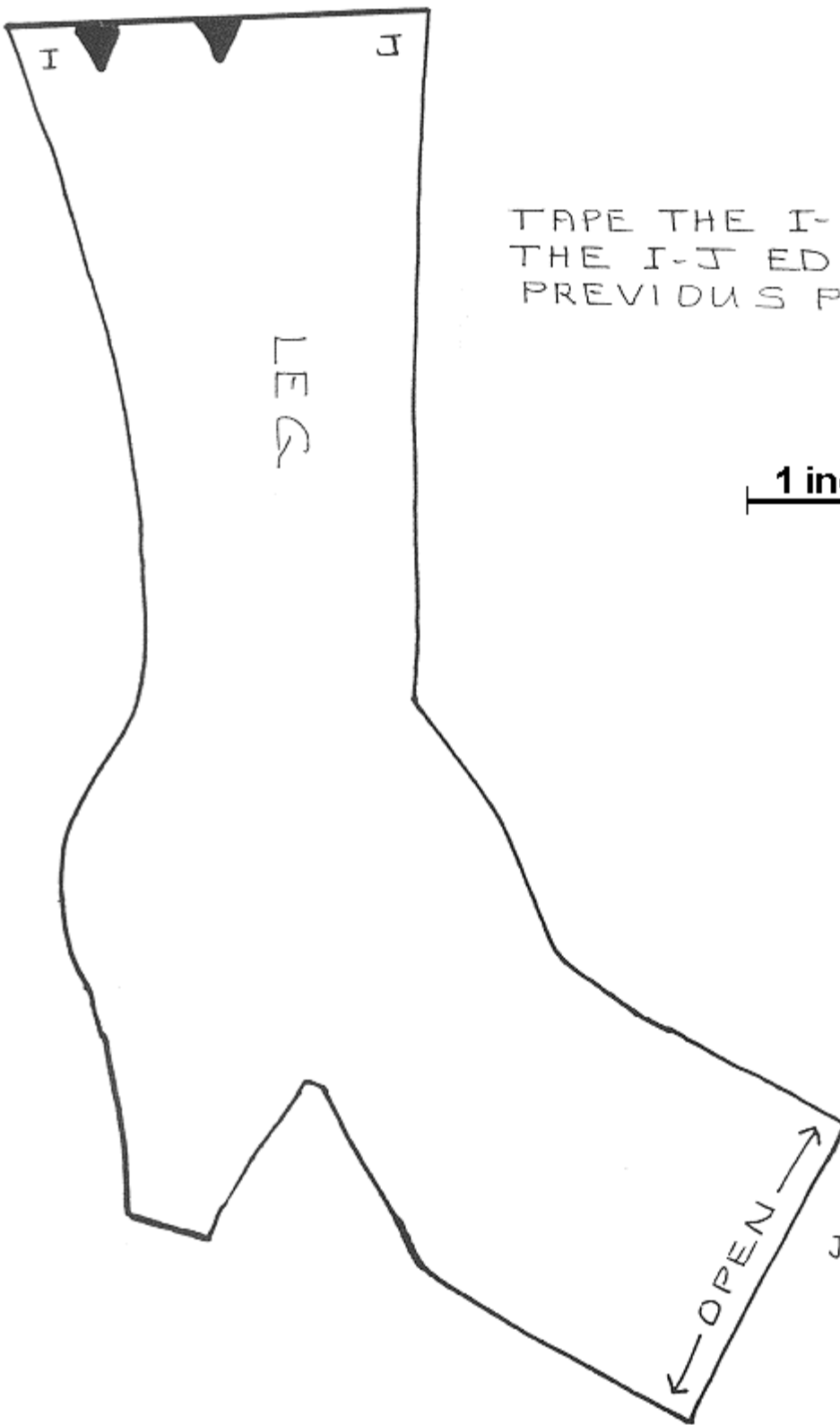
Page 5



Milli'

Copyright 2000©
Judi Ward-Judi's Dolls

Page 6



TAPE THE I-J EDGE TO
THE I-J EDGE ON THE
PREVIOUS PAGE.

1 inch

Milli'

Copyright 2000©
Judi Ward-Judi's Dolls

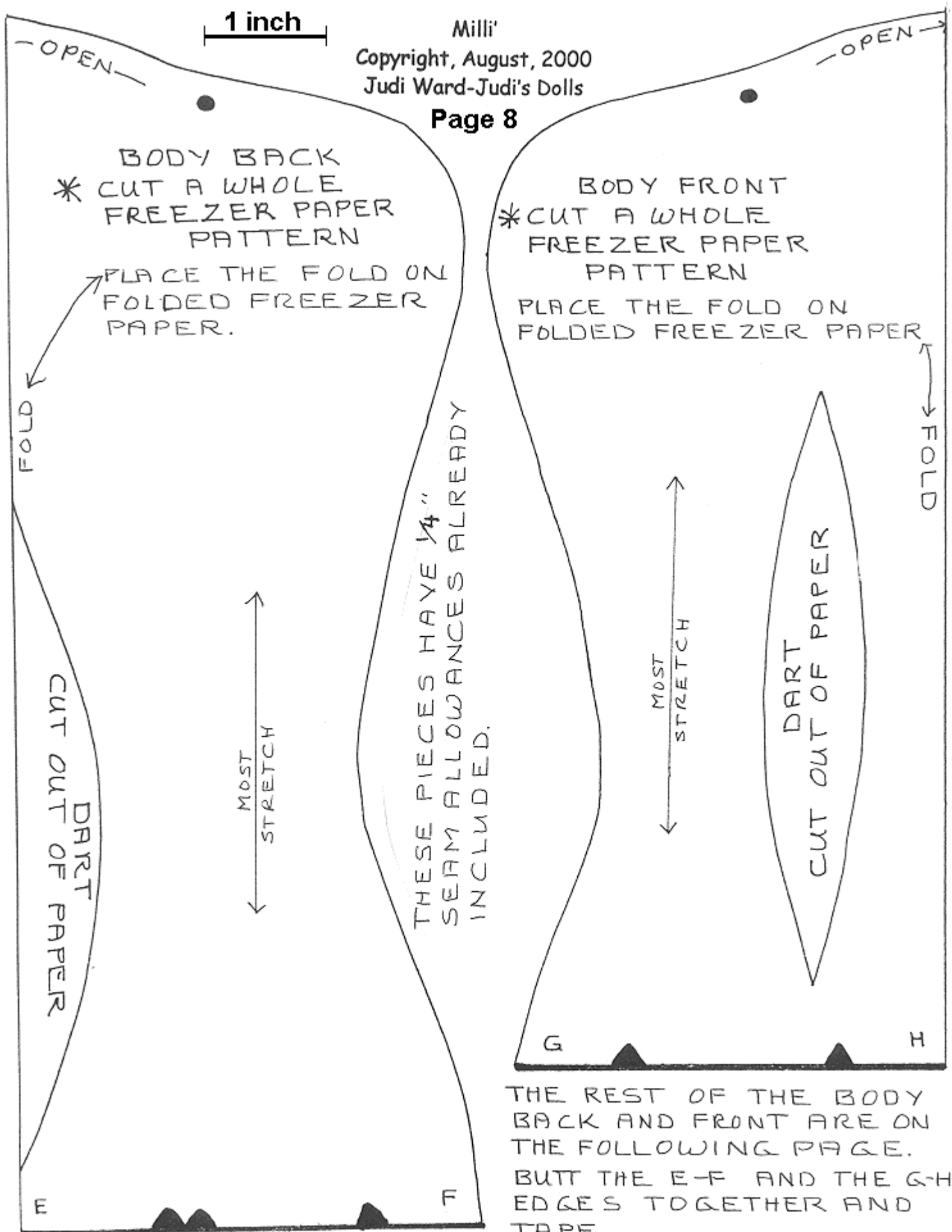
Page 7

1 inch

Milli'

Copyright, August, 2000
Judi Ward-Judi's Dolls

Page 8



BODY BACK
* CUT A WHOLE
FREEZER PAPER
PATTERN

PLACE THE FOLD ON
FOLDED FREEZER
PAPER.

FOLD

DART
CUT OUT OF PAPER

MOST
STRETCH

THESE PIECES HAVE 1/4"
SEAM ALLOWANCES ALREADY
INCLUDED.

BODY FRONT
* CUT A WHOLE
FREEZER PAPER
PATTERN

PLACE THE FOLD ON
FOLDED FREEZER PAPER

FOLD

DART
CUT OUT OF PAPER

MOST
STRETCH

G

H

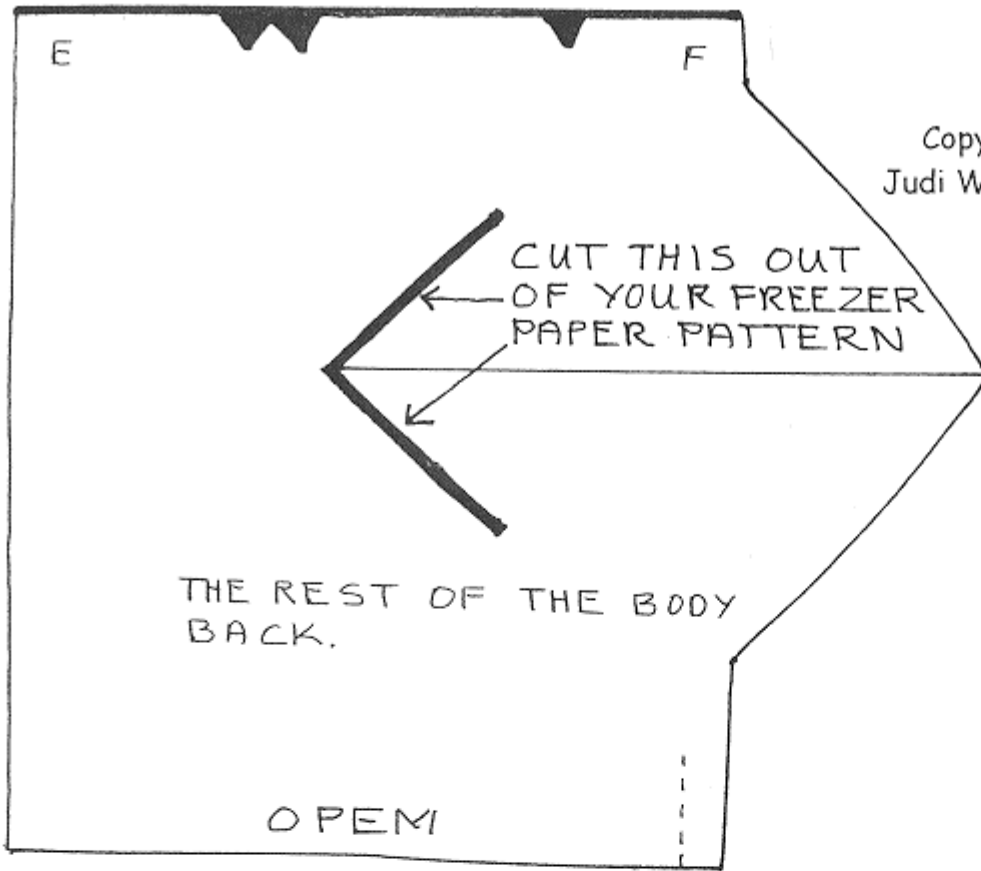
THE REST OF THE BODY
BACK AND FRONT ARE ON
THE FOLLOWING PAGE.
BUT THE E-F AND THE G-H
EDGES TOGETHER AND
TAPE.

Milli'

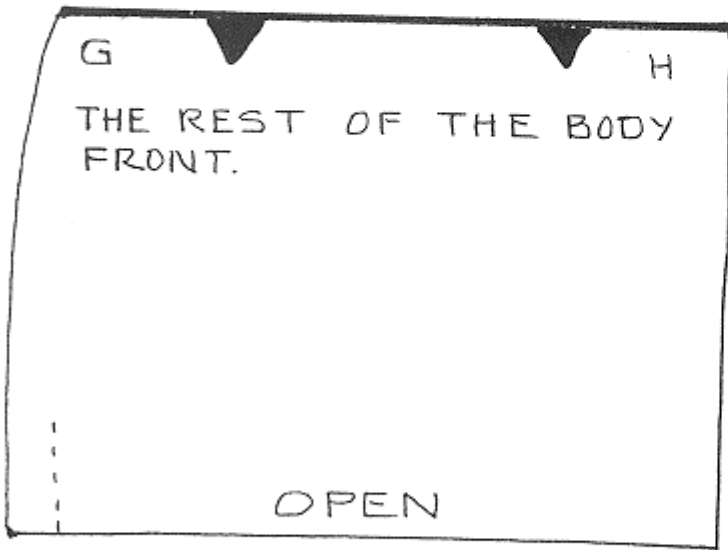
Copyright 2000©
Judi Ward-Judi's Dolls

Page 9

OPTIONAL EARS TEMPLATE.
CUT 1 REVERSE ONE
FROM FREEZER PAPER.



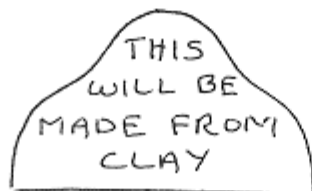
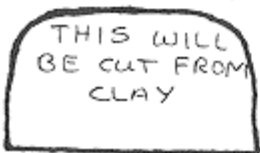
1 inch



CUT 2 FROM
FREEZER PAPER.



OPTIONAL SHOE TABS
CUT 1 FROM STIFF PAPER..
...CHOOSE ONE...



PLACE ON FOLD

Milli'

Copyright 2000©
Judi Ward-Judi's Dolls

Page 10

OPTIONAL SLEEVE/SLEEVES
CUT A WHOLE FREEZER PAPER
PATTERN

BUTT THIS C-D EDGE TO
THE C-D EDGE ON THE
FOLLOWING PAGE AND
TAPE TOGETHER BEFORE
USE.

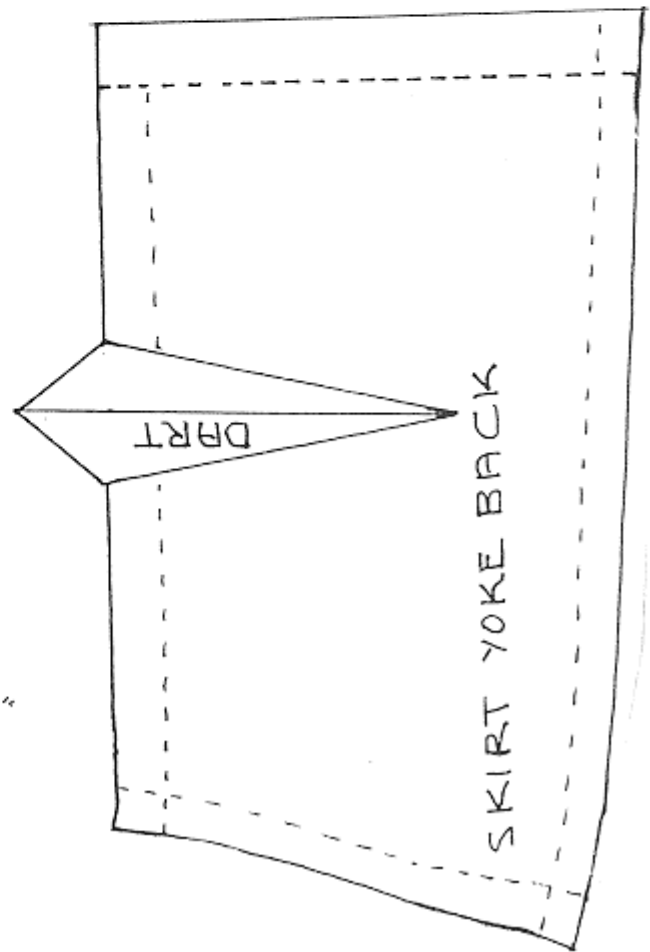
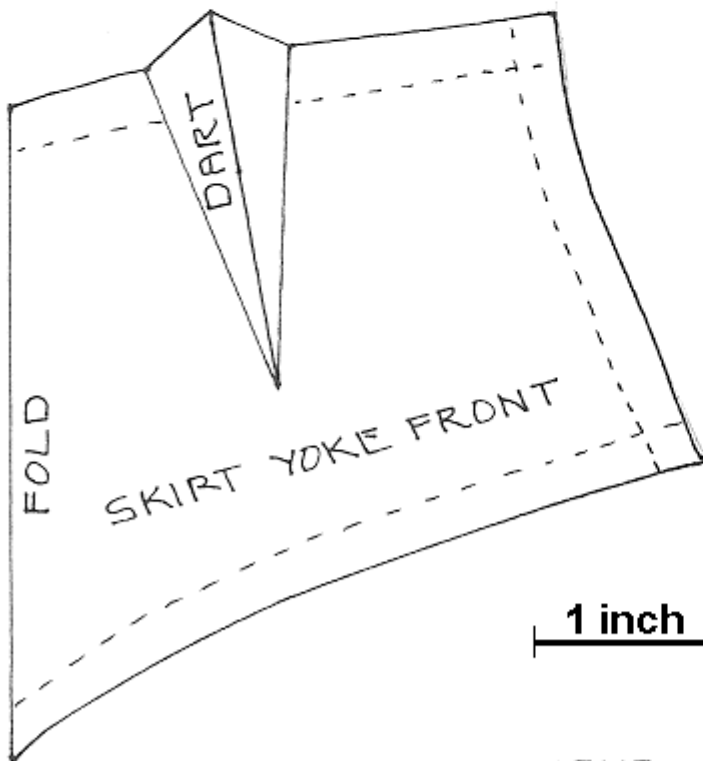
1 inch

THIS EDGE WILL BE SEWED

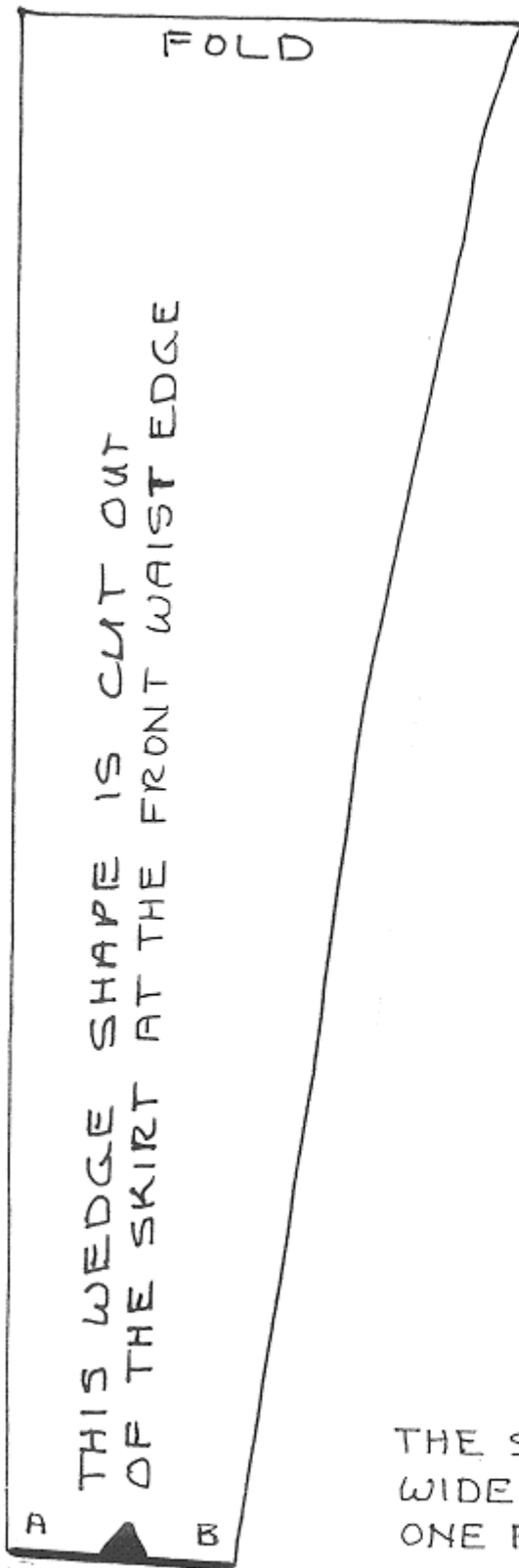
THIS EDGE WILL BE GATHERED

THE REST OF THE SLEEVE
 PATTERN IS ON THE PRECEEDING
 PAGE.

THIS EDGE WILL BE BORDER LACE
 OR HEMMED.

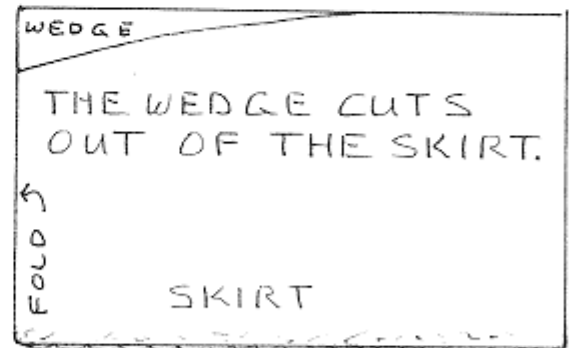


THESE PIECES HAVE $\frac{1}{4}$ "
 SEAM ALLOWANCES
 ALREADY INCLUDED.



BUT THE A-B EDGES TOGETHER AND TAPE BEFORE USE

1 inch



THE SKIRT IS A RECTANGLEE 18" WIDE BY ONE AND ONE QUARTER TO ONE AND ONE HALF YARDS LONG. THE ABOVE WEDGE IS CUT OUT OF THE FRONT AT THE WAIST EDGE. THE SKIRT PIECE IS FIRST FOLDED IN HALF ALONG THE 18" WIDTH.