



FEATURE TEMPLATES  
PENCIL CARBON THE BACK  
AND FOLLOW DIRECTIONS  
FOR USE.

1"



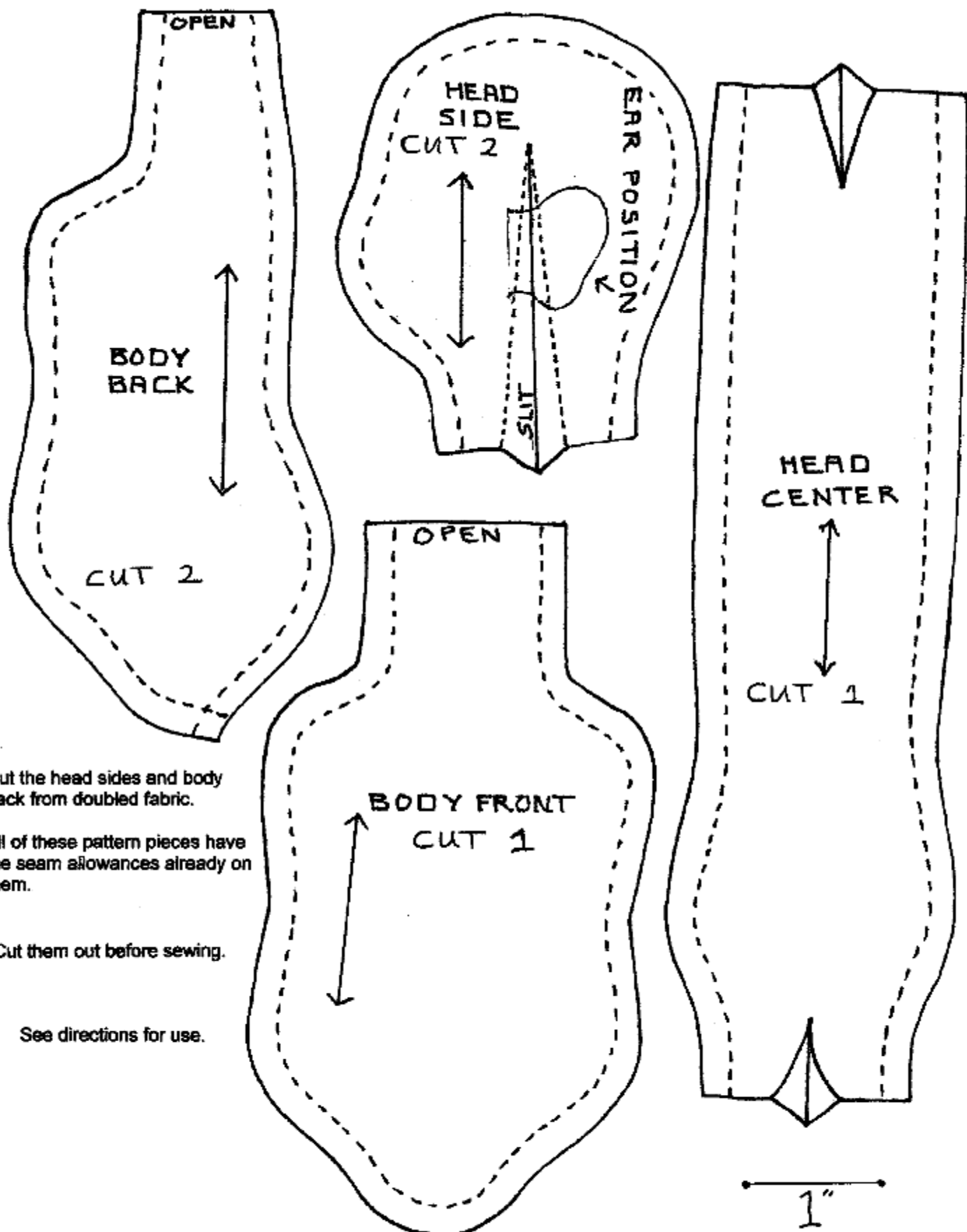
A SAMPLE FACE DRAWING.  
FOR REFERENCE ONLY.



ANOTHER SAMPLE FACE DRAWING.  
FOR REFERENCE ONLY.



ANOTHER SAMPLE FACE DRAWING.  
FOR REFERENCE ONLY.



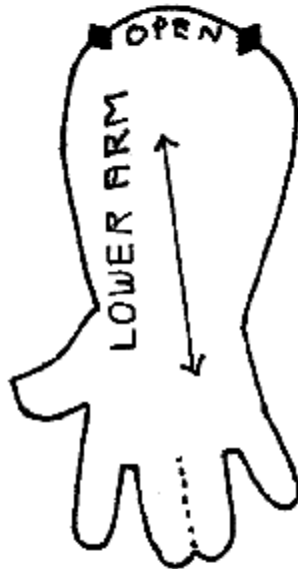
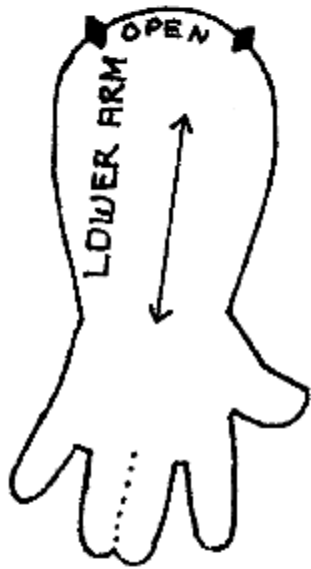
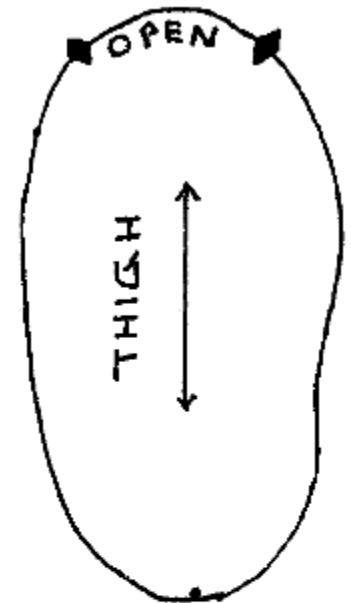
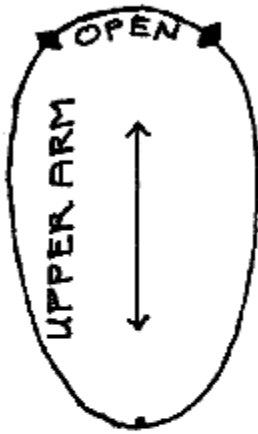
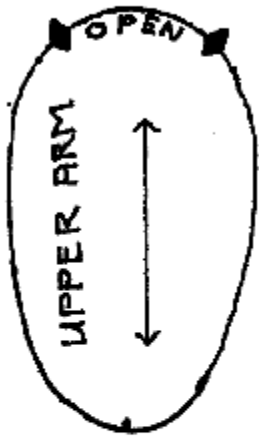
Cut the head sides and body back from doubled fabric.

All of these pattern pieces have the seam allowances already on them.

Cut them out before sewing.

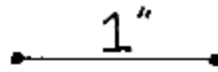
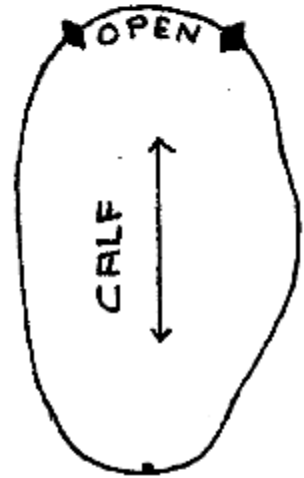
See directions for use.

Arrows  $\longleftrightarrow$  denote the direction of "give" for velour. The direction of the "give" goes in the opposite direction if you use woven cotton fabric.



Arrows  $\longleftrightarrow$  denote the direction of "give" for velour.  
The direction of the "give" goes in the opposite direction if you use woven cotton fabric.

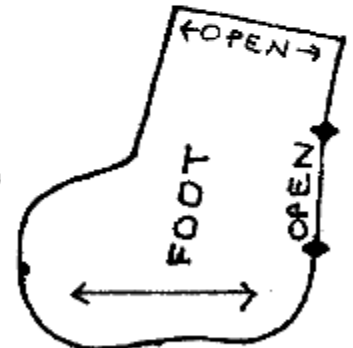
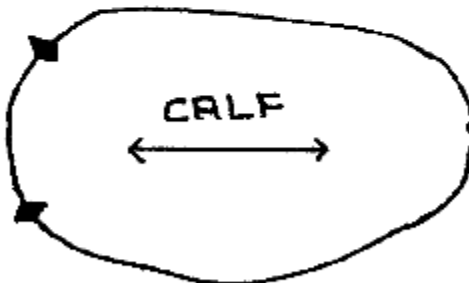
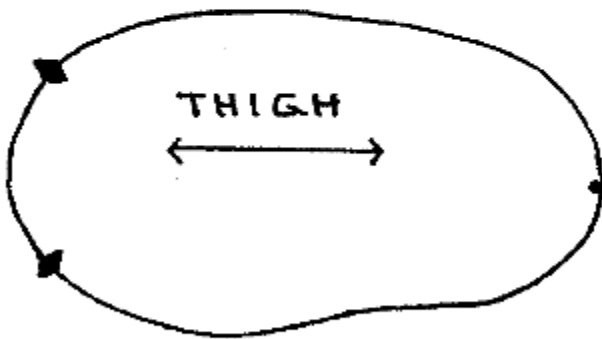
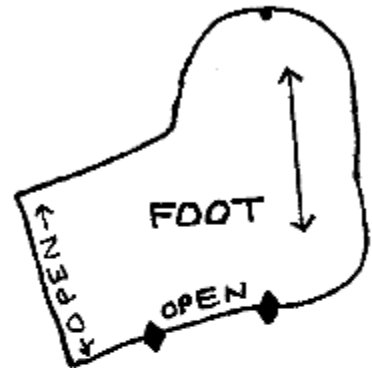
All of the pieces on this page are  
TEMPLATES  
See directions for use. \*

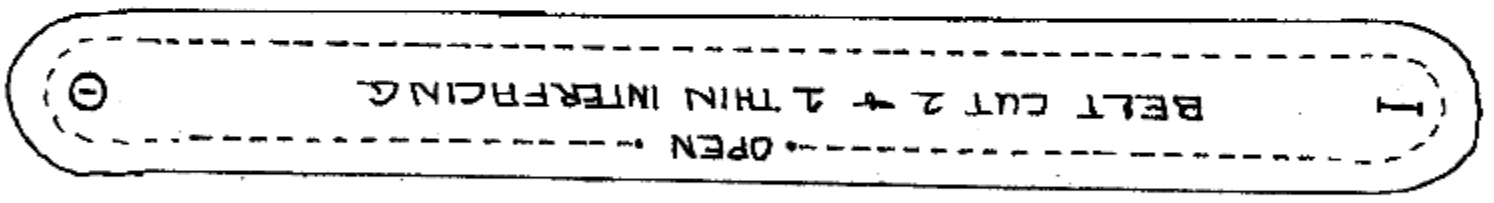
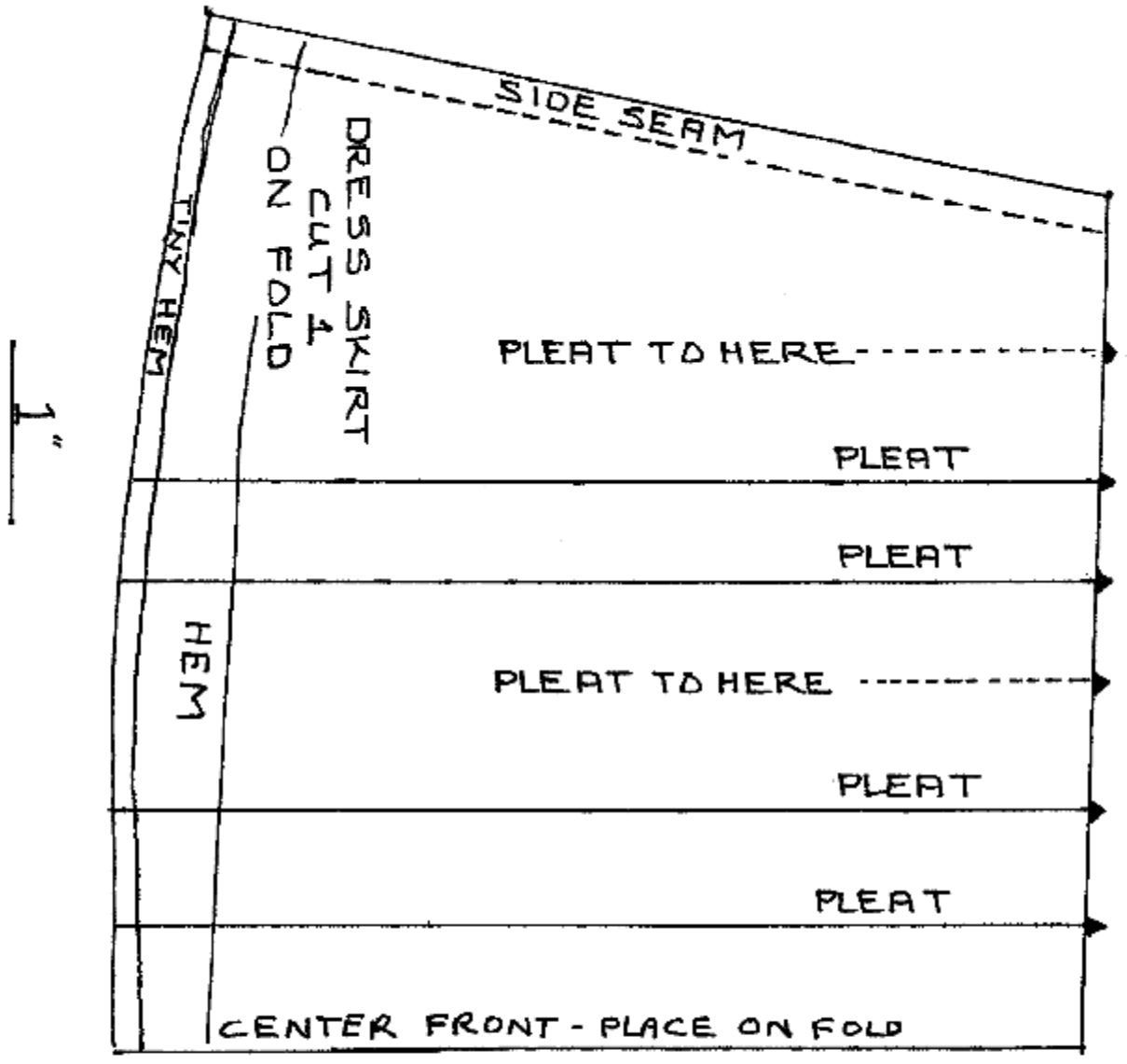


TOE TEMPLATES

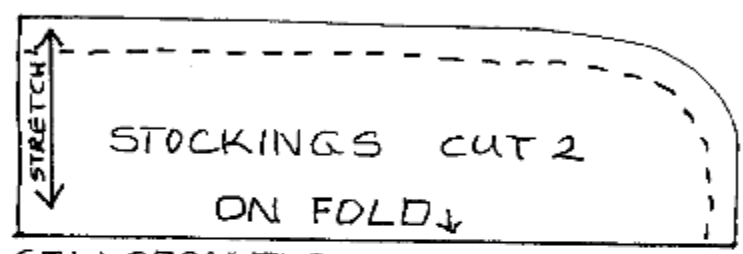
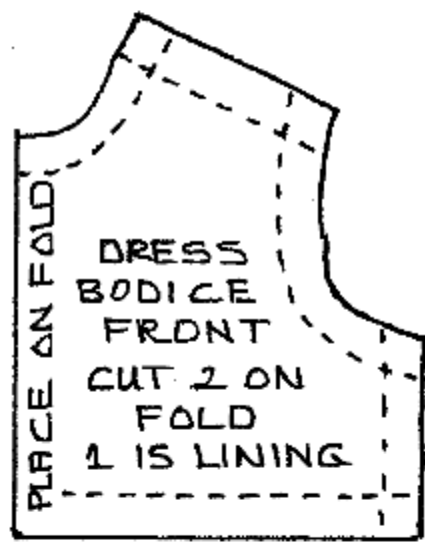
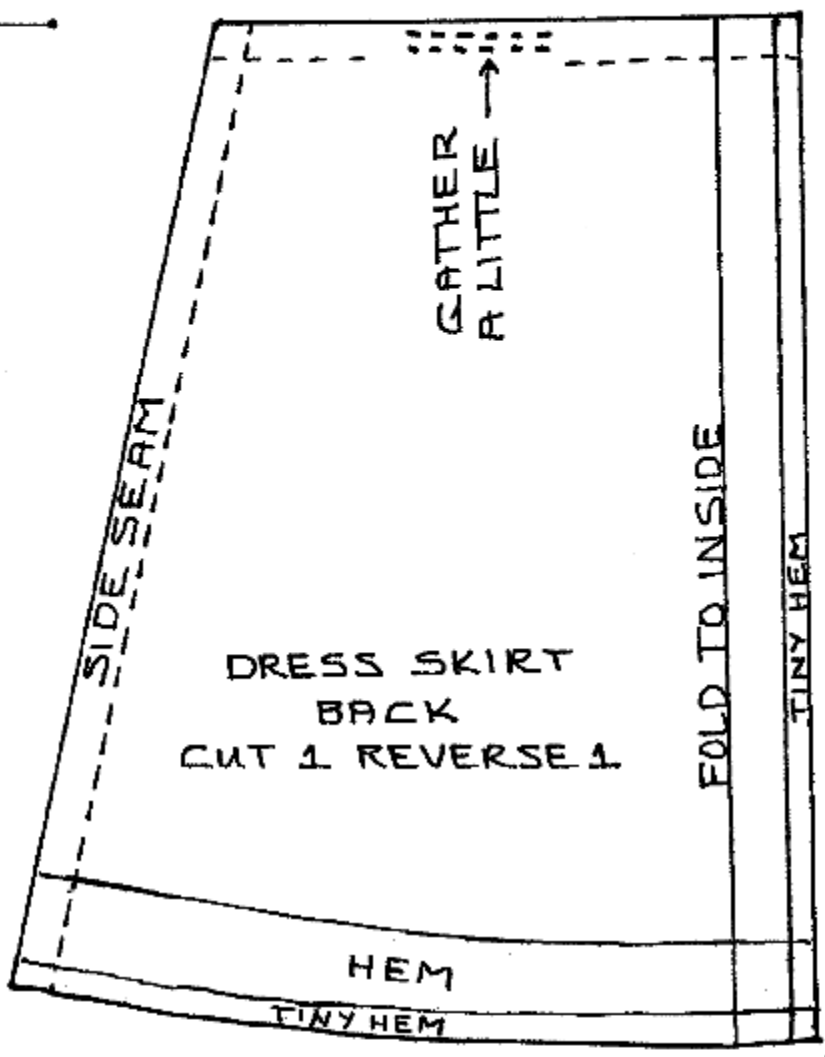
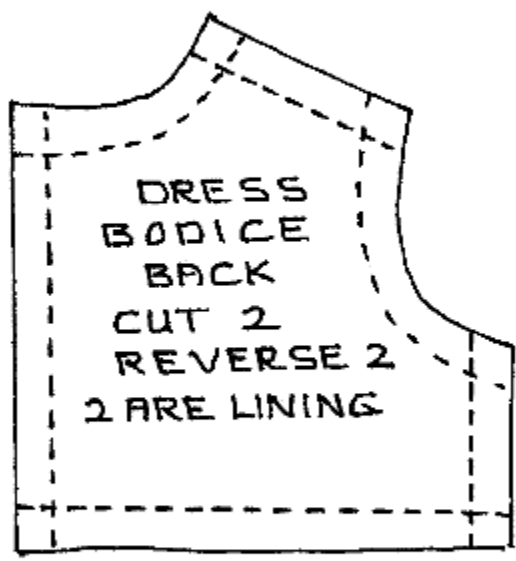


EAR TEMPLATES

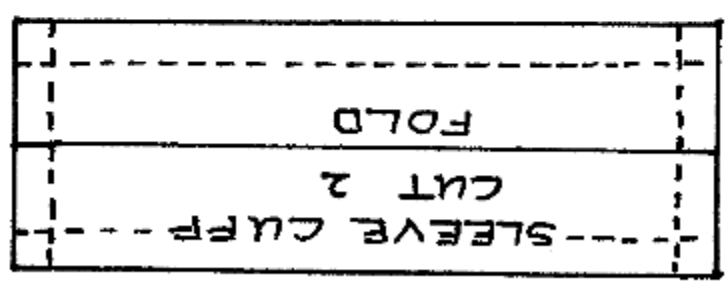
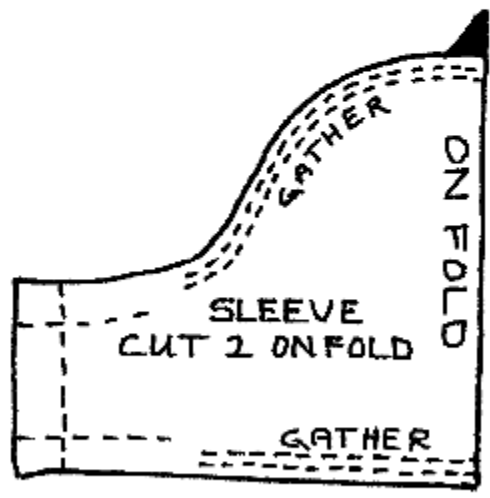




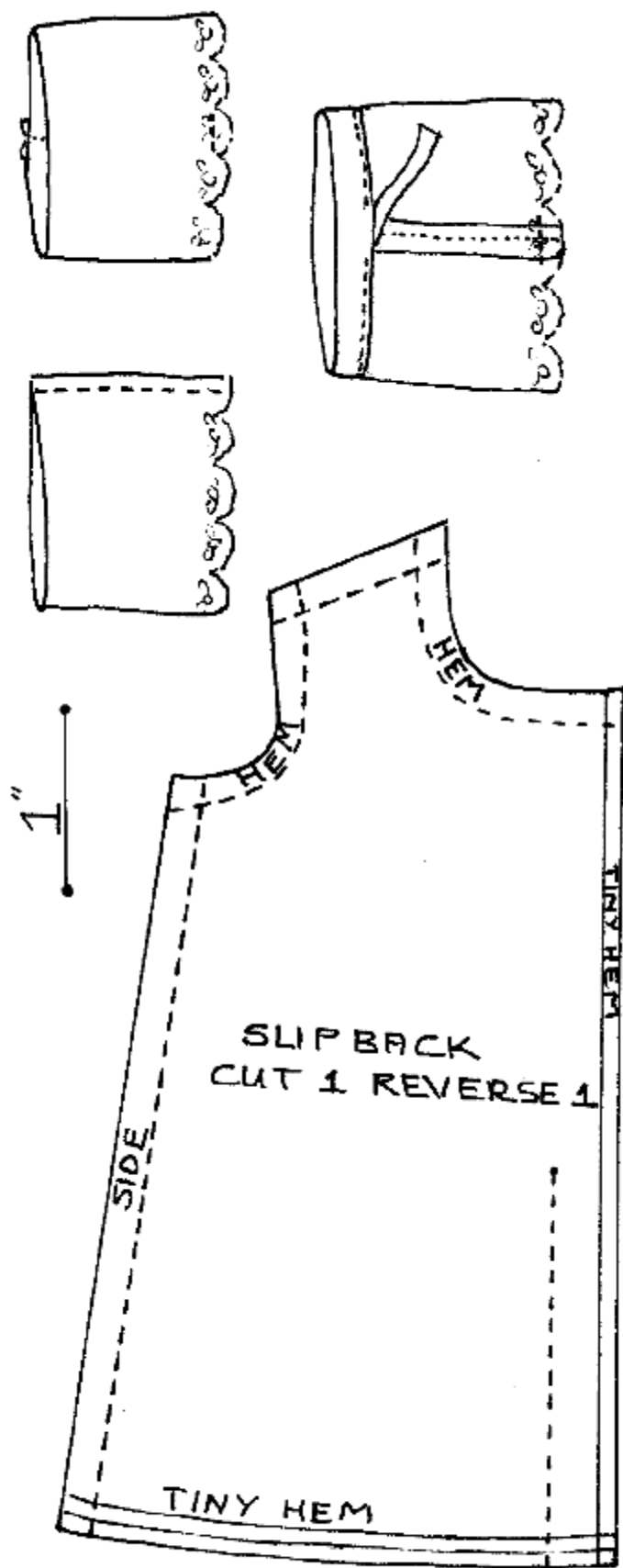
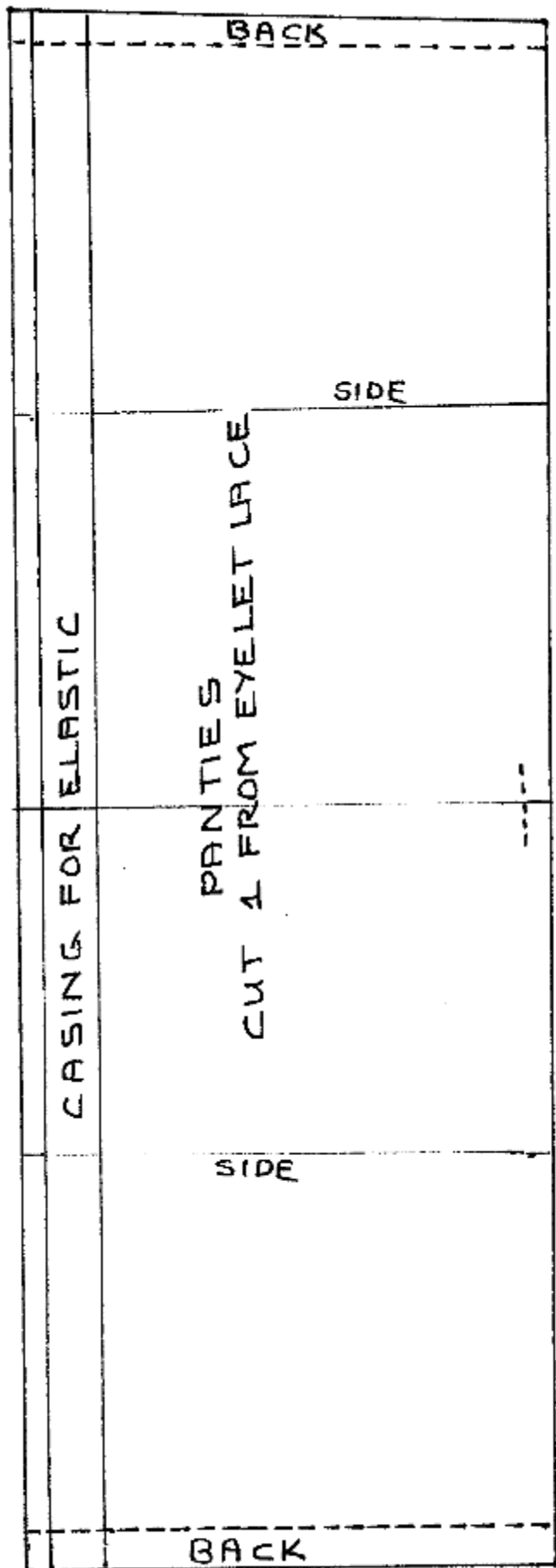
1"

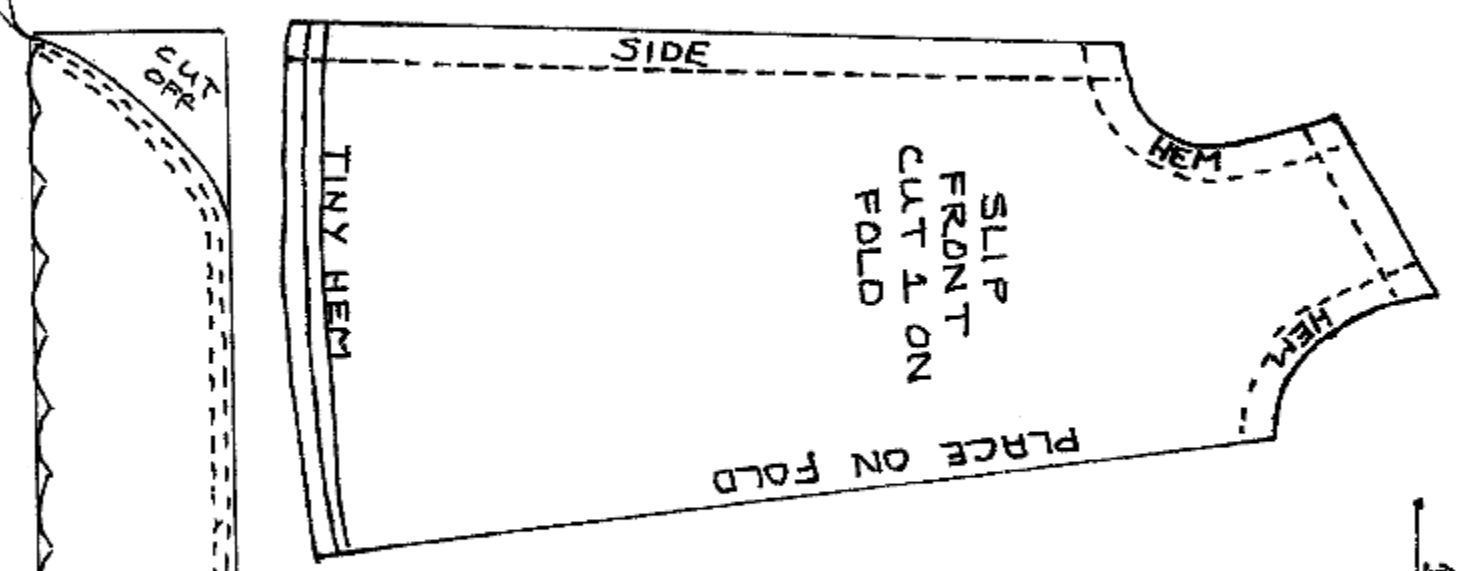


SEW SEAM. TURN RIGHT SIDE OUT  
PUT ON BLEUETTE.



THE STOCKINGS ARE TO BE  
CUT FROM THE TOP OF A NYLON  
BABY SOCK FOR BEST RESULTS.

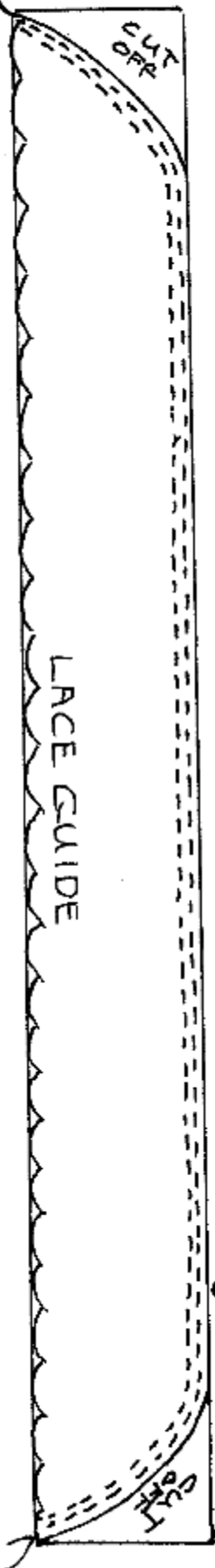


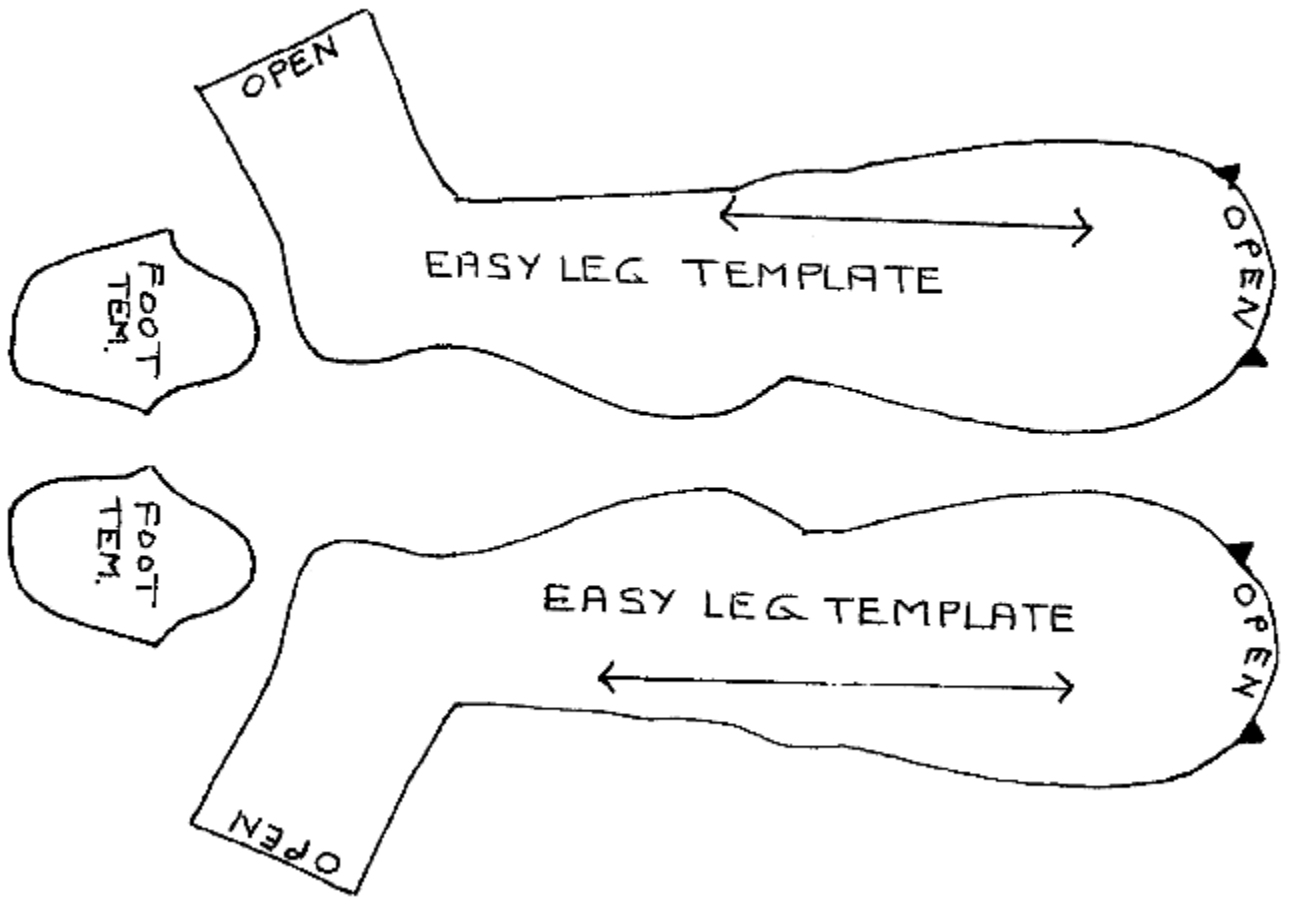


1"

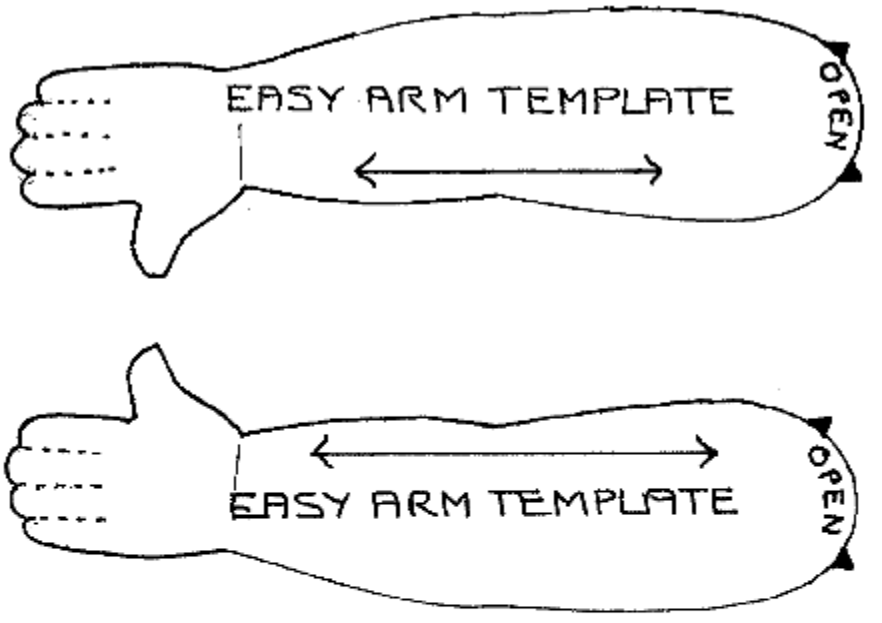
THE SLIP CAN ALSO BE MADE FROM 6 WIDE EYE LET LACE. THE BOTTOM EDGE WILL BE STRAIGHT, NOT CURVED IF YOU USE LACE.

RUN TWO ROWS OF GATHER STITCHES





FOOT FRONT TEMPLATES USE AS THE OTHER TOE TEMPLATES ARE USED.



THE STRAIGHT LEGS AND ARMS. THE EASY HANDS AS SHOWN SHOULD HAVE THE FINGERS STITCHED BETWEEN EITHER BY HAND OR BY MACHINE. YOU CAN STUFF THE FINGERS WITH CHENILLE STEMS TOO. YOU CAN ALSO USE THE EVEN EASIER MIT HAND. CUT THE HANDS OFF AT THE WRIST AND USE THE MIT HAND TEMPLATES INSTEAD BY ATTACHING THEM TO THE WRISTS.