

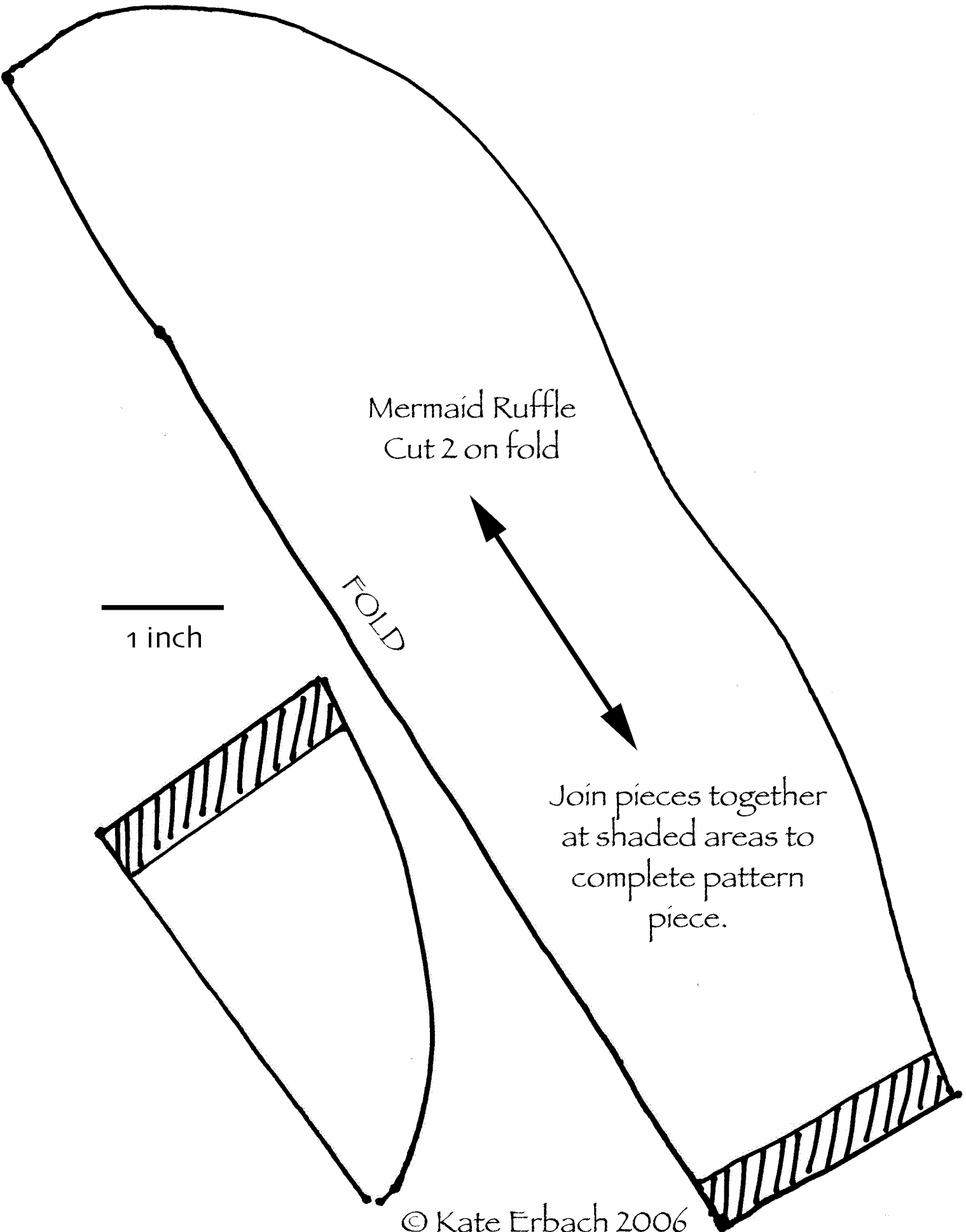
Mermaid Ruffle
Cut 2 on fold

1 inch

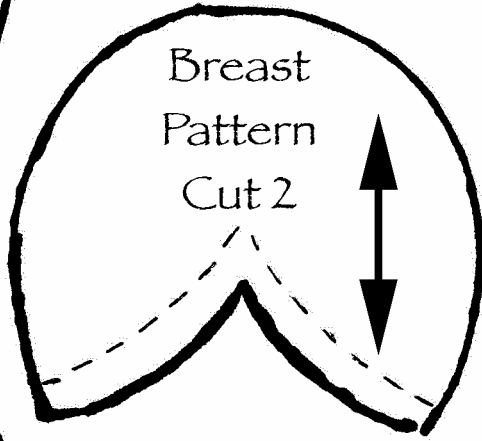
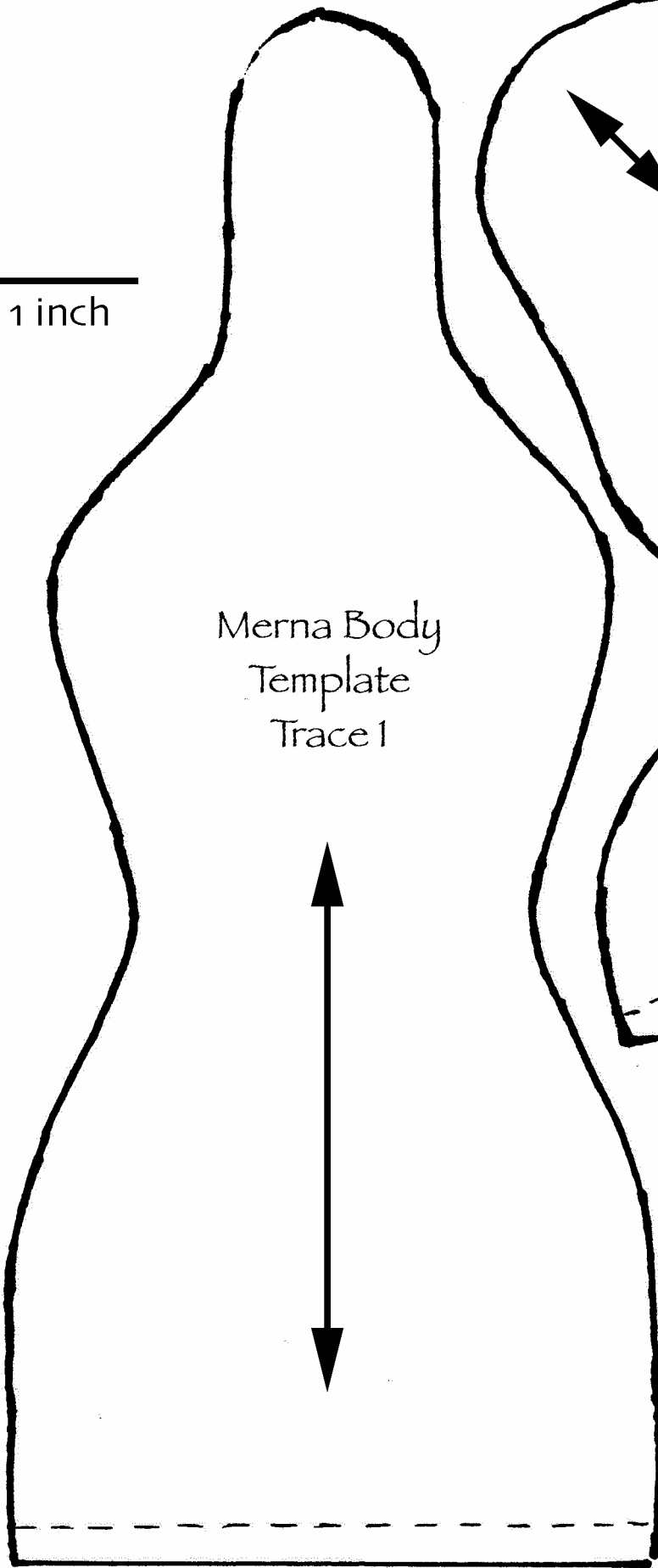
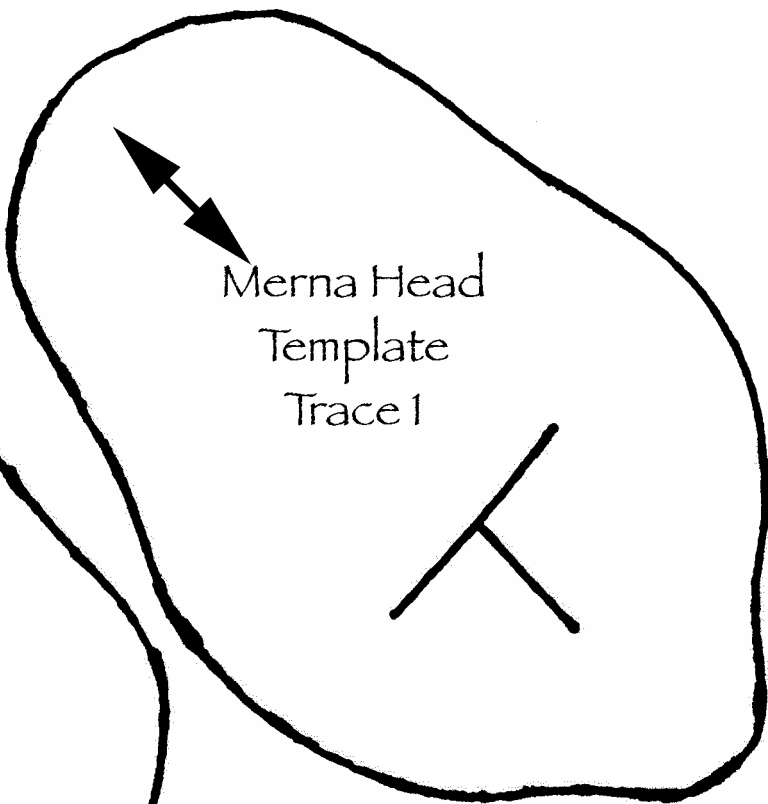
FOLD

Join pieces together
at shaded areas to
complete pattern
piece.

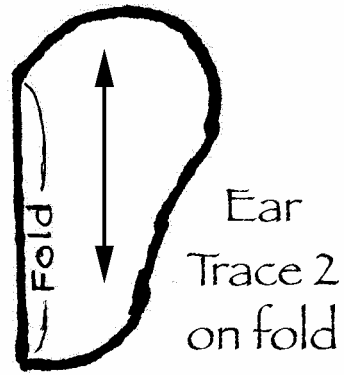
© Kate Erbach 2006



1 inch



© Kate Erbach 2006



Mouth
Facing



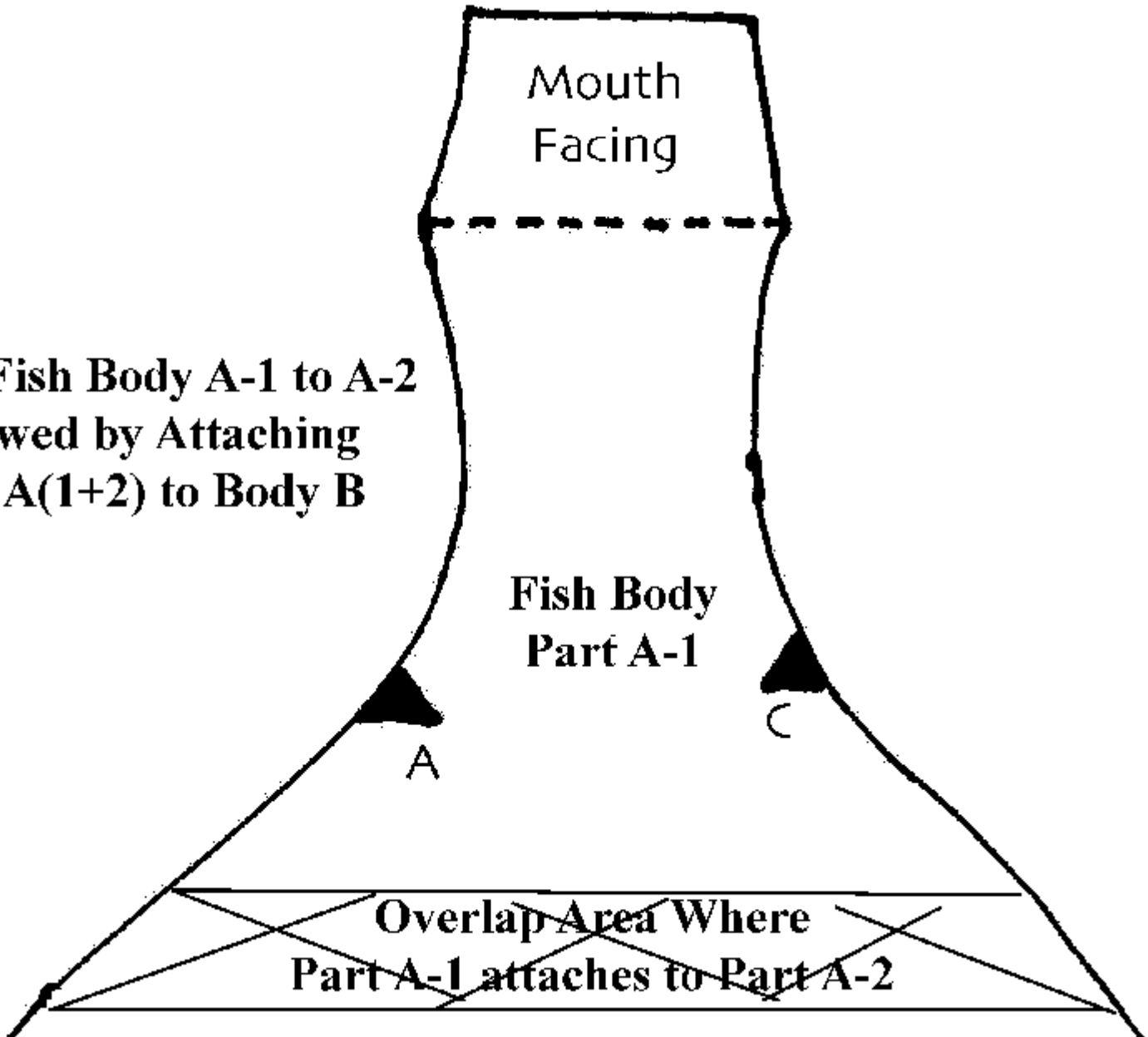
**Attach Fish Body A-1 to A-2
Followed by Attaching
Body A(1+2) to Body B**

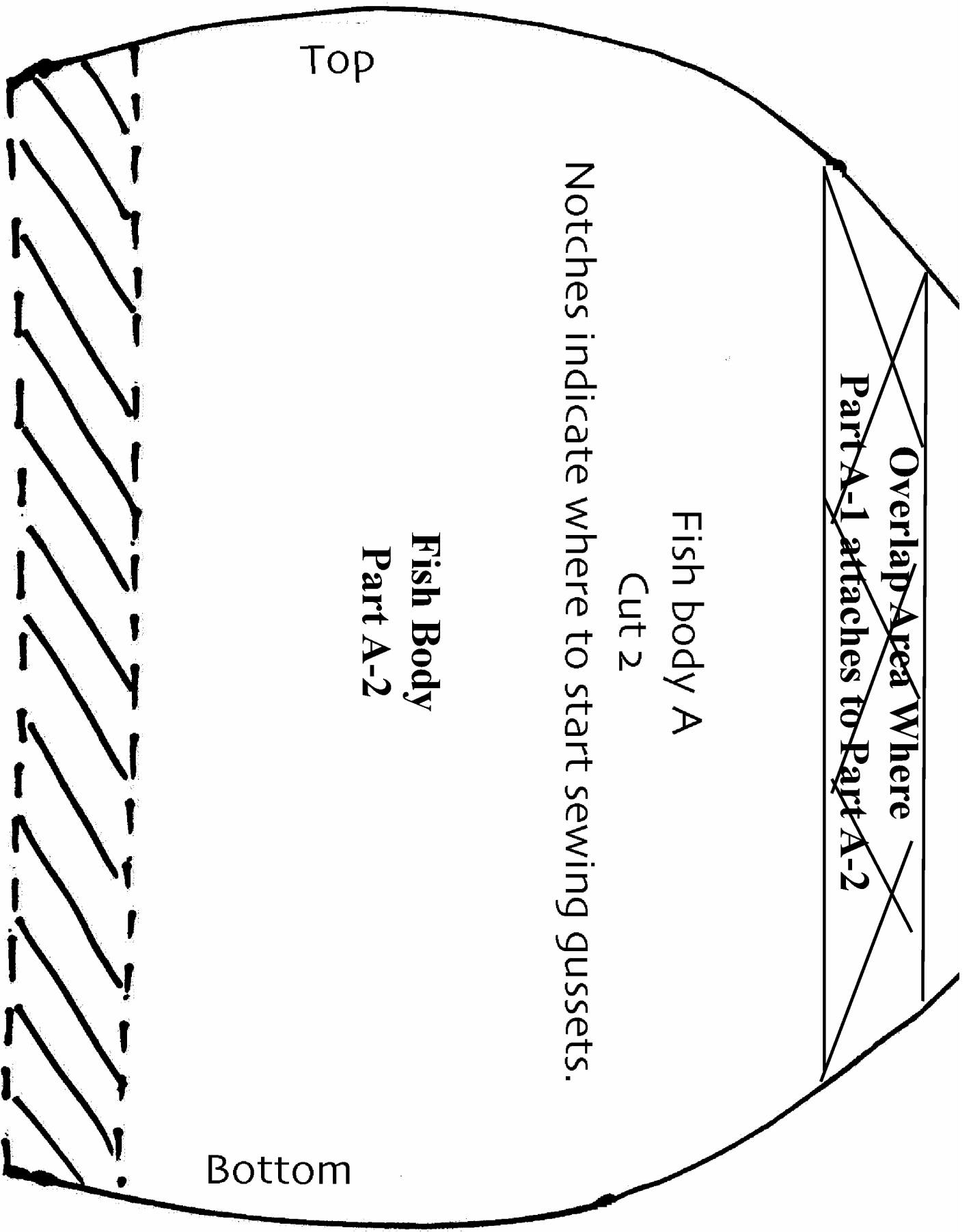
**Fish Body
Part A-1**

A

C

~~Overlap Area Where
Part A-1 attaches to Part A-2~~





Notches indicate where to stop sewing gussets.

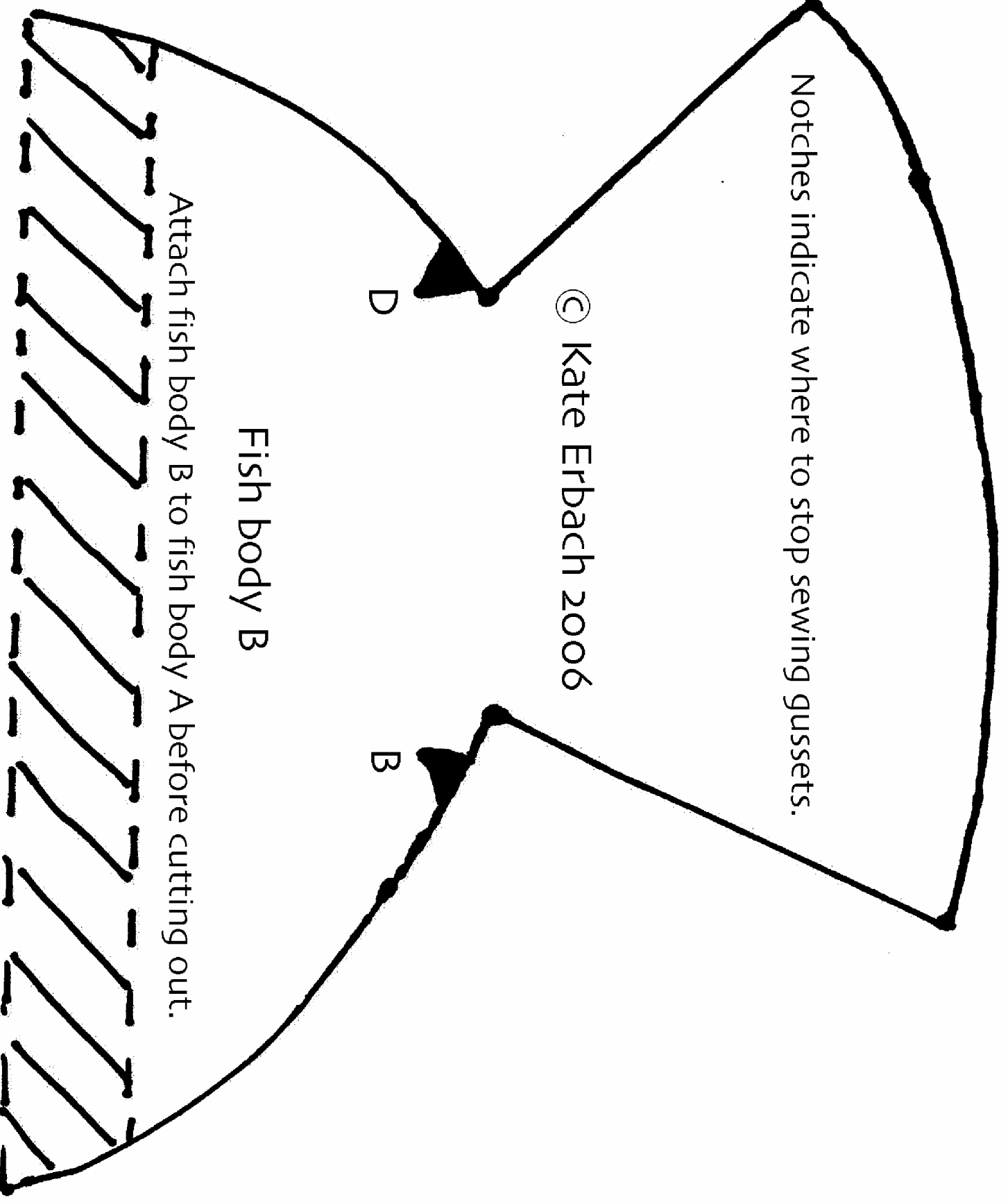
© Kate Erbach 2006

D

B

Fish body B

Attach fish body B to fish body A before cutting out.



**Attach Tail A-1 to A-2
Followed by Attaching
Tail A(1+2) to Tail B(1+2)**

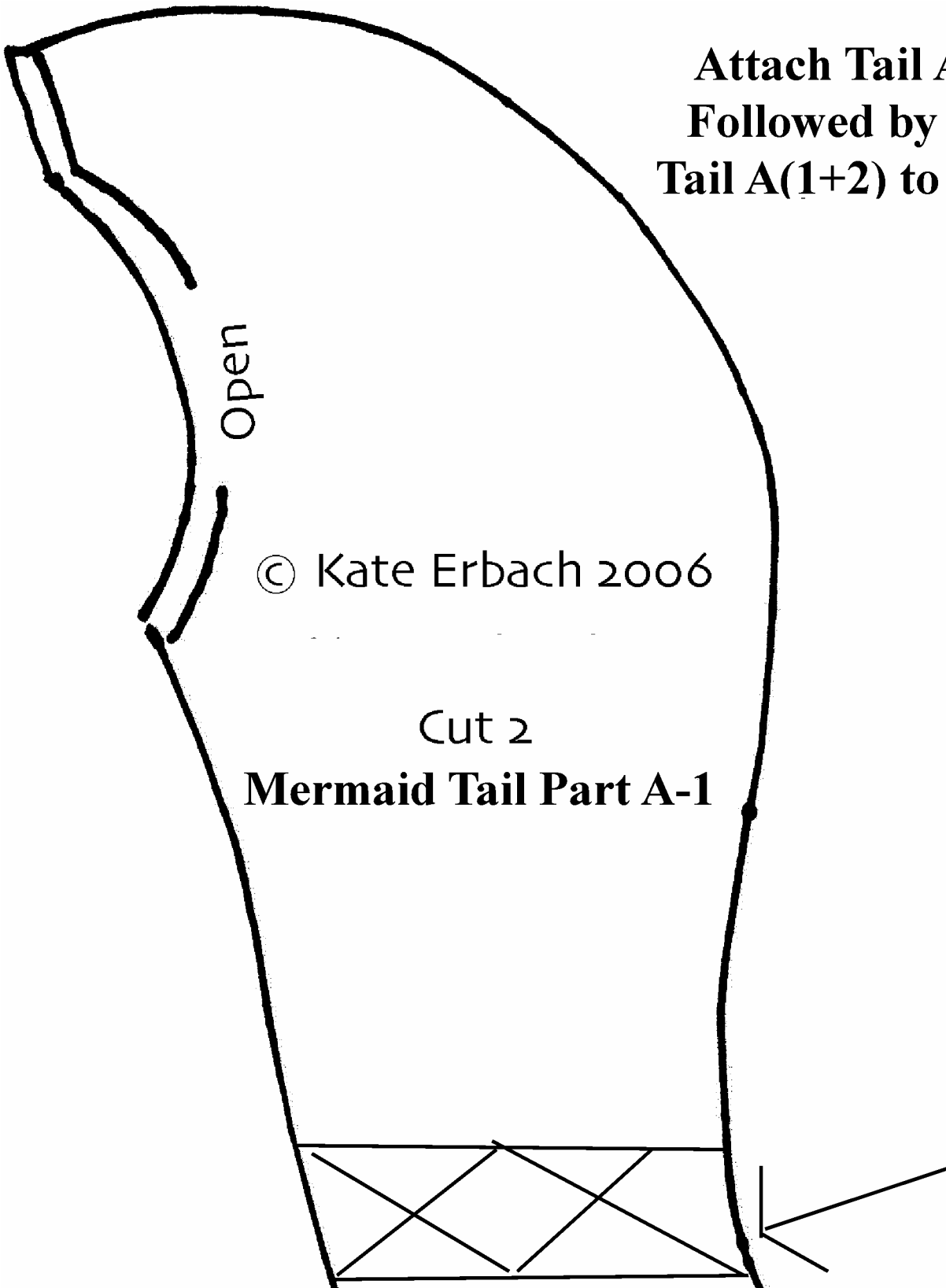
Open

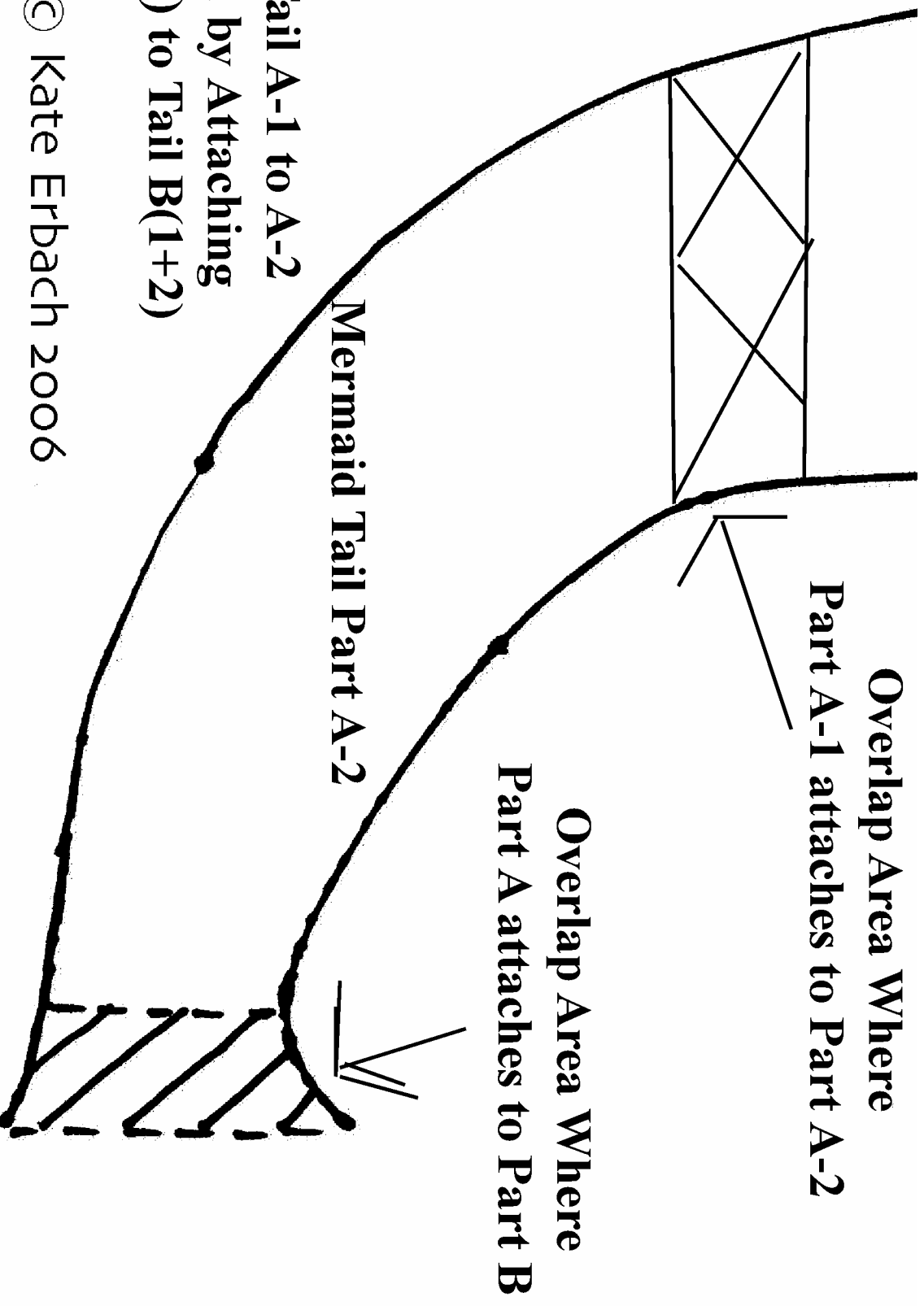
© Kate Erbach 2006

Cut 2

Mermaid Tail Part A-1

**Overlap Area Where
Part A-1 attaches to Part A-2**



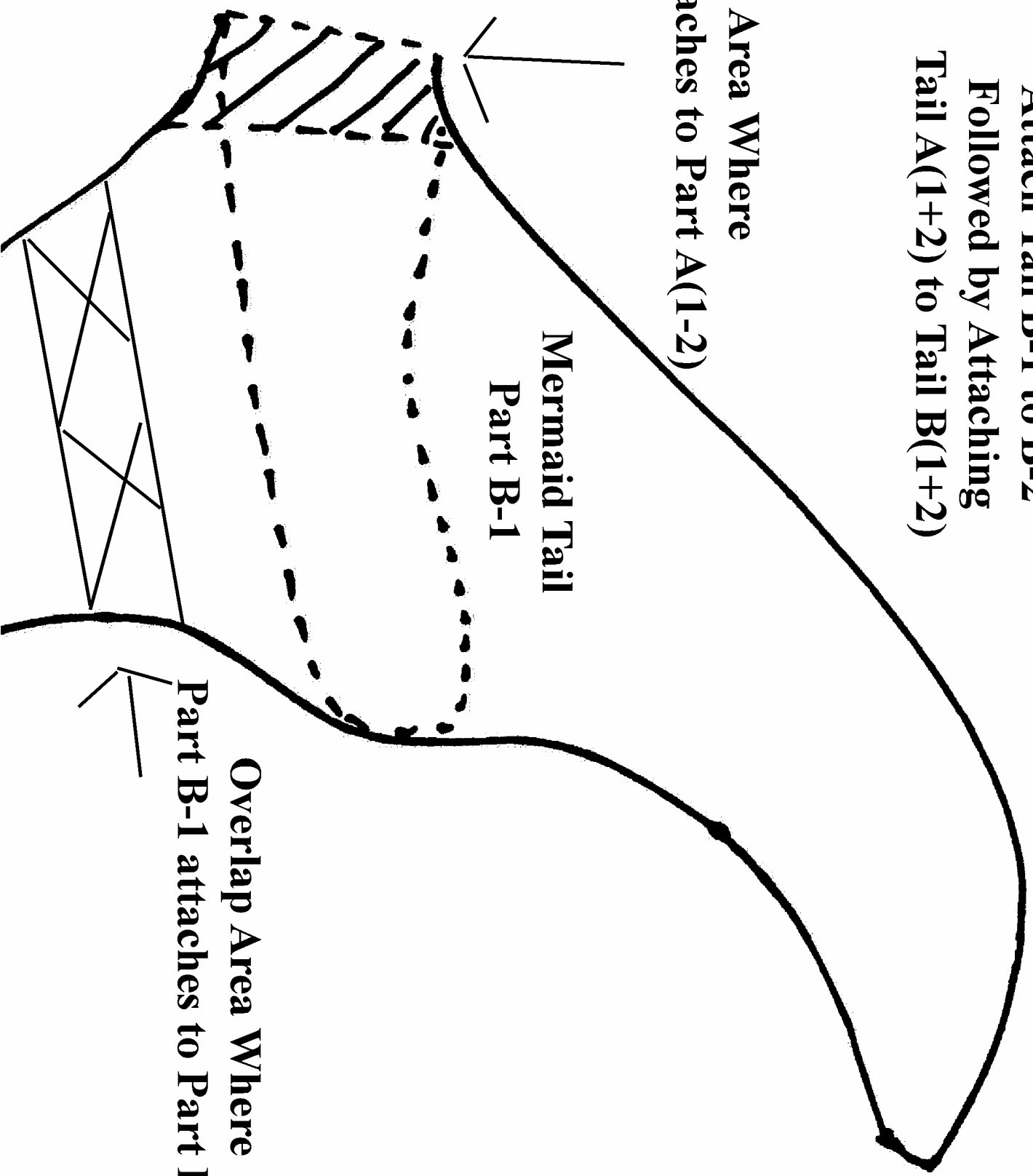


**Attach Tail A-1 to A-2
Followed by Attaching
Tail A(1+2) to Tail B(1+2)**

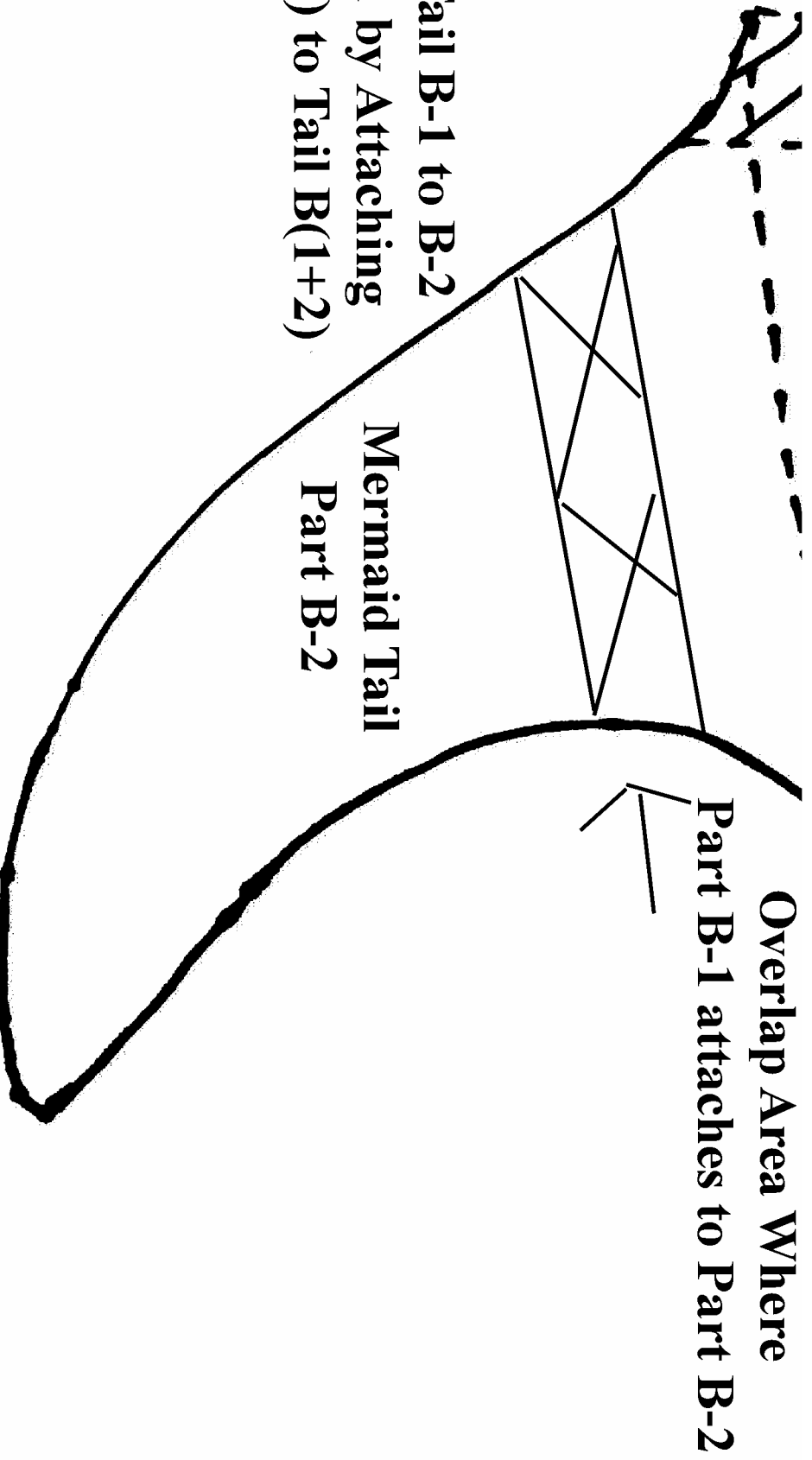
© Kate Erbach 2006

**Attach Tail B-1 to B-2
Followed by Attaching
Tail A(1+2) to Tail B(1+2)**

**Overlap Area Where
Part B(1-2) attaches to Part A(1-2)**



**Overlap Area Where
Part B-1 attaches to Part B-2**



**Attach Tail B-1 to B-2
Followed by Attaching
Tail A(1+2) to Tail B(1+2)**

**Mermaid Tail
Part B-2**

**Overlap Area Where
Part B-1 attaches to Part B-2**